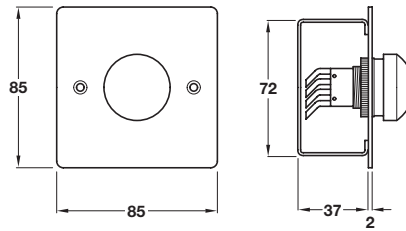


## A Green domed exit switch, heavy duty

- Large green exit dome
- Momentary exit button
- For internal or external use
- Flush mounted, for installation in single gang box (box not included)
- For surface mounting order box **D** separately
- Sealed contacts
- NO and NC contacts
- Stainless steel face plate

Finish	Cat. No.
Brushed stainless steel	912.03.013

Order qty: 1 pc

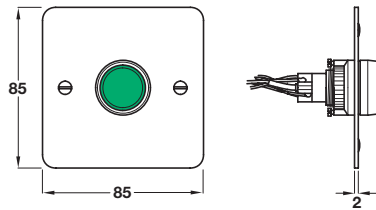


## B Illuminated exit switch

- Illuminated green exit button
- Illumination requires 12V DC
- Flush mounted, for installation in single gang box (box not included)
- For surface mounting order box **D** separately
- Sealed contacts
- NO and NC contacts
- Stainless steel face plate

Finish	Cat. No.
Brushed stainless steel	912.03.014

Order qty: 1 pc

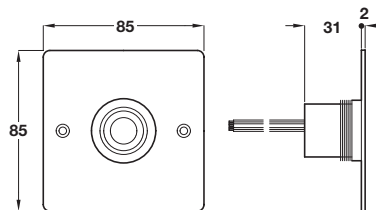


## C Halo illuminated exit switch

- With red/green LEDs
- Illumination requires 12V DC
- Flush mounted, for installation in single gang box (box not included)
- For surface mounting order box **D** separately
- Sealed contacts
- NO and NC contacts
- Stainless steel face plate

Finish	Cat. No.
Brushed stainless steel	912.03.022

Order qty: 1 pc

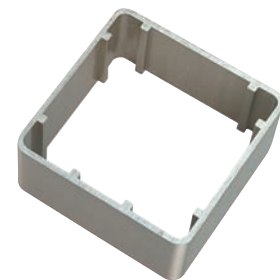
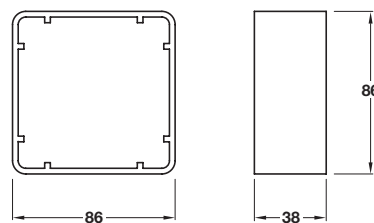


## D Surface box

- Single gang box, for surface mounting
- For use with exit buttons **A**, **B** and **C**
- Extruded steel

Finish	Cat. No.
Brushed stainless steel	912.03.015

Order qty: 1 pc



## E Illuminated test switch

- Illuminated green test button
- Illumination requires 12V DC supply
- Narrow plate, for architrave mounting
- Flush mounted, back plate included
- Sealed contacts
- NO and NC contacts
- Stainless steel face plate

Finish	Cat. No.
Brushed stainless steel	912.03.023

Order qty: 1 pc

