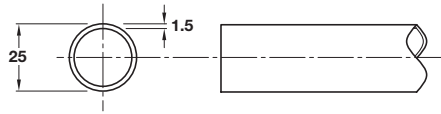


A Headrail

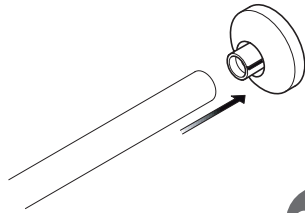


- 3 m length, Ø 25 mm
- Fixed over divisions and doors
- Order socket, hanger and corner piece separately, as required
- Stainless steel, grade 316



Finish	Cat. No.
Satin stainless steel	980.34.120

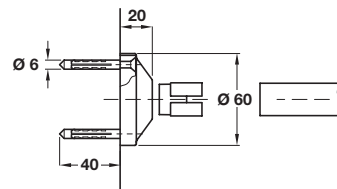
Order qty: 1 pc



B Wall to headrail socket

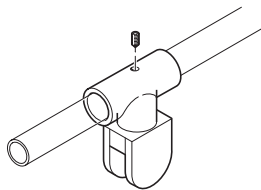


- Secures headrail to wall
- Press fit headrail onto connecting plug
- Fixings are included
- Stainless steel, grade 316 with galvanized steel connecting plug



Finish	Cat. No.
Satin stainless steel	980.34.070

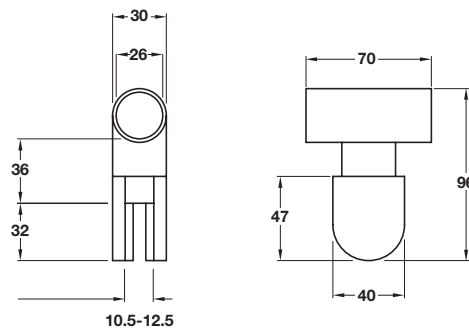
Order qty: 1 pc



C Hanger

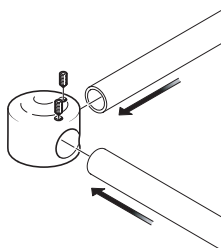


- Secures headrail to glass division panel
- Slides over headrail and secured by fixings
- Fixings included
- Clear plastic spacers included for laminate glass thickness 10.5 to 12.5 mm
- Stainless steel, grade 316



Finish	Cat. No.
Satin stainless steel	980.34.010

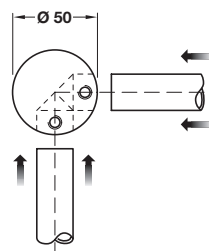
Order qty: 1 pc



D Corner piece



- Secures headrail at 90°
- Fixings included
- Stainless steel, grade 316



Finish	Cat. No.
Satin stainless steel	980.34.100

Order qty: 1 pc