

For full details on all these products, please refer to our **Electronic Security and Access Control** catalogue, **Section 6** - Locking Hardware

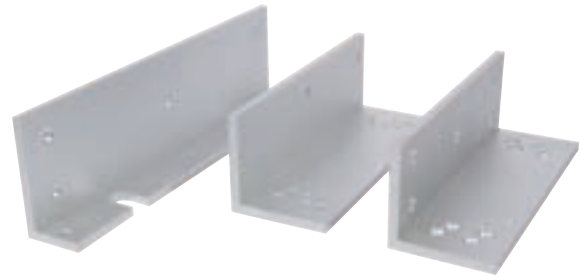


### A Standard electromagnetic lock

- Single door, single swing unit
- Holding force **545 kg**
- Always fail unlocked
- Option of door status monitor (DSM)
- LED indicator on underside of monitored version
- Steel armature fixed through door provides secure mounting
- 12V/24V DC
- Current consumption - 500 mA @ 12V, 250 mA @ 24V
- 3 year warranty
- Lock dims (height x width x depth): 73 x 266 x 40 mm
- Locking plate dims (height x width x depth): 60 x 185 x 12 mm
- Aluminium body

Option	Unmonitored	Monitored
Cat. No.	912.05.001	912.05.003

Order qty: 1 pc



### C 'Z' and 'L' brackets

- To convert magnet for inswinging doors
- To suit items **A** and **B** (2 bracket sets required for **B**)
- Large bracket dims (height x width x depth): 76 x 266 x 38 mm
- Small bracket dims (height x width x depth): 64 x 185 x 64 mm
- Steel, silver finish

Cat.No.	912.05.021
---------	------------

Order qty: 1 set



### D 'L' bracket

- For doors without overhead reveal
- To suit items **A** and **B** (2 brackets required for **B**)
- Dims (height x width x depth): 76 x 266 x 38 mm
- Steel, silver finish

Cat.No	912.05.020
--------	------------

Order qty: 1 pc



### B Standard double electromagnetic lock

- Double door, single swing unit
- Holding force **545 kg** per magnet
- Always fail unlocked
- Option of door status monitor (DSM)
- LED indicator on underside of monitored version
- Steel armature fixed through door provides secure mounting
- 12V/24V DC
- Current consumption - 500 mA @ 12V, 250 mA @ 24V per magnet
- 3 year warranty
- Lock dims (height x width x depth): 73 x 532 x 40 mm
- Locking plate dims (height x width x depth): 60 x 185 x 12 mm
- Aluminium body

Option	Unmonitored	Monitored
Cat. No.	912.05.002	912.05.004

Order qty: 1 pc



### E Flush mounting armature housing

- For doors requiring flush fittings
- To suit items **A** and **B** shown on page 7 (2 housings required for **B**)
- Dims (height x width x depth): 46 x 194 x 15 mm
- Steel, silver finish

Cat. No.	912.05.022
----------	------------

Order qty: 1 pc



### F Surface mounting armature housing

- For doors requiring flush fittings
- To suit items **A** and **B** (2 housings required for **B**)
- Dims (height x width x depth): 68 x 193 x 19 mm
- Steel, silver finish with grey plastic end caps

Cat. No.	912.05.079
----------	------------

Order qty: 1 pc