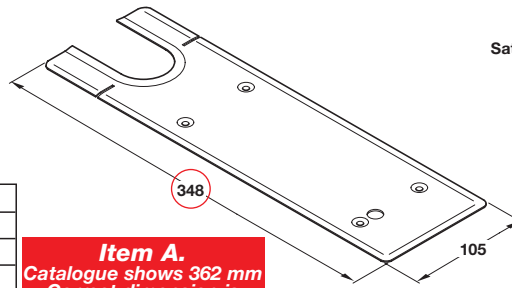


**A Floor spring cover plate**

- To suit all springs on pages 59 and 61
- Corners adjacent to pivot may be removed for single action applications
- Stainless steel or brass

Finish	Cat. No.
Satin stainless steel	932.10.110
Polished stainless steel	932.10.119
Polished brass	932.10.118

Order qty: 1 pc



**Item A.**  
Catalogue shows 362 mm  
Correct dimension is  
348 mm

Satin stainless steel finish

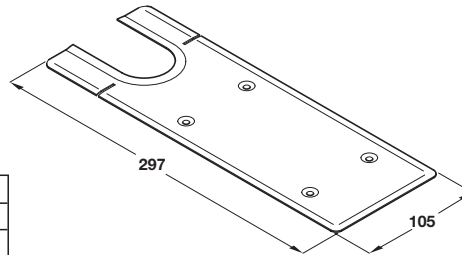


**B Floor spring cover plate**

- To suit all spring on page 60
- Corners adjacent to pivot may be removed for single action applications
- Stainless steel or brass

Finish	Cat. No.
Satin stainless steel	932.10.130
Satin brass	932.10.131

Order qty: 1 pc

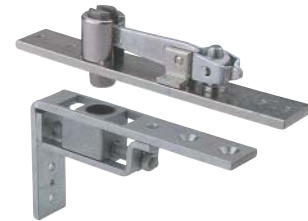
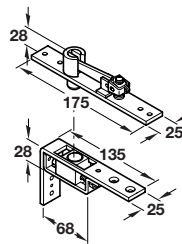


**C Heavy duty double action top centre**

- To suit timber and metal doors
- Adjustable retractable upper pivot for double action doors
- Lateral adjustment between 30-50 mm
- Recommended minimum depth of head frame 50 mm
- Fixing screws included
- Mild steel. Zinc plated

Cat. No.	932.10.400
----------	------------

Order qty: 1 pc

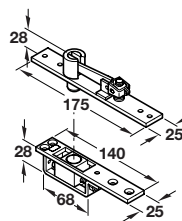


**D Standard duty double action top centre**

- To suit timber and metal doors
- Adjustable retractable upper pivot for double action doors
- Lateral adjustment between 36-58 mm
- Recommended minimum depth of head frame 50 mm
- Fixing screws included
- Mild steel. Zinc plated

Cat. No.	932.10.410
----------	------------

Order qty: 1 pc

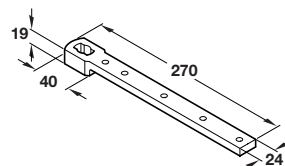


**E Double action bottom strap**

- To suit timber and metal doors
- Fixing screws included
- Drop forged steel. Zinc plated

Cat. No.	932.10.270
----------	------------

Order qty: 1 pc



21.05.09/2\*