

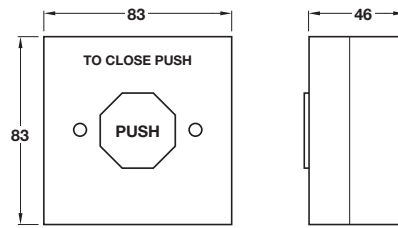
Note: When using door retainers, floor mounted patterns would be suitable for floor springs and wall mounted versions for over door closers and jamb pattern closers should be mounted in the same horizontal plane as the closing device. Failure to put the retainer in these positions could result in door warpage.

A Release button

- 24V DC
- Easy for use by disabled persons
- Ideal for use in care homes, theatres and cinemas where the fire doors need to be open occasionally
- Plastic switch plate and back box

Finish	Cat. No.
White	912.05.086

Order qty: 1 pc

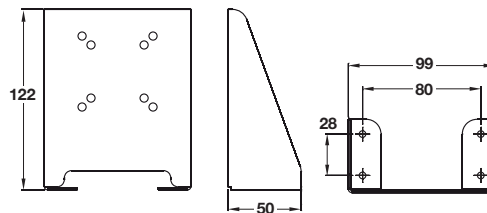


B Floor mounting bracket

- 115 mm high x 80 mm wide x 65 mm deep
- To suit items **B** and **C** page 57
- Strengthened aluminium

Finish	Cat. No.
White	912.05.087

Order qty: 1 pc

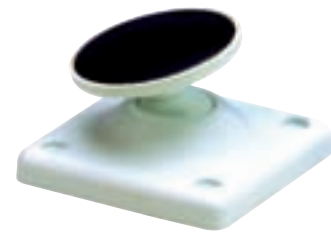
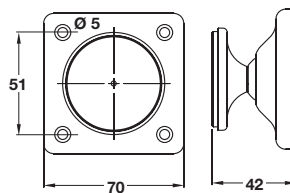


C Low profile keeper plate

- To suit items **B** and **C** page 57
- Only 20 mm deep

Finish	Cat. No.
Chrome plate on black backplate	912.05.088

Order qty: 1 pc



D Power supply unit

- Dims (height x width x depth): 206 x 237 x 90 mm
- To suit electro-magnetic closers and door retainers
- 24V DC
- One power supply is capable of controlling several units
- Mild steel case. Off white coated

Power	Cat. No.
1 Amp	931.86.911
2 Amp	931.86.912

Order qty: 1 pc

