

Hinge wood screws

Countersunk head with cross slot
Stainless steel



Ø x thread length	Cat. No.
4.0 x 20 mm	014.32.922
5.0 x 30 mm	014.32.941
6.0 x 30 mm	014.32.962

Order qty: Multiples of 200 pcs

Important: The logo shown indicates the type and size of screw required, which must be ordered separately



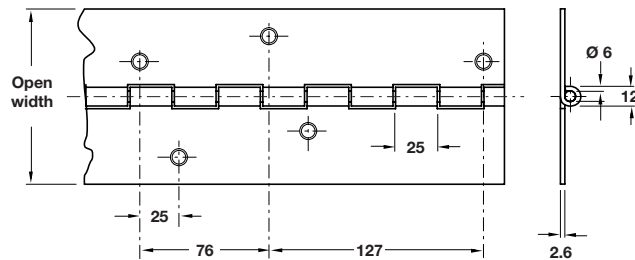
A Stainless steel continuous hinge

- 2134 mm length
- Heavy duty; max. adjusted door weight **120 kg**
- 42 holes per hinge
- CP grade **4**
- Ideal for use where there is a chance of fingers being trapped, i.e. nurseries, mental institutions etc.
- Avoids necessity for finger guards on pull side of door
- Stainless steel, mill finish, stainless steel pin

Length x open width	2134 x 101.6 mm
Cat. No.	351.12.000



Order qty: 1 pc (2134 mm length)



5



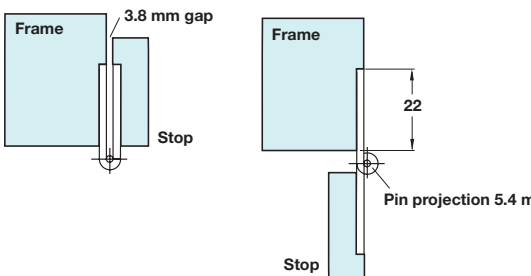
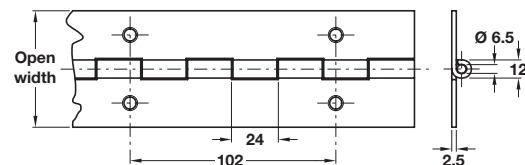
B Stainless steel continuous hinge

- 2000 mm length
- Heavy duty; max. adjusted door weight **120 kg**
- 40 holes per hinge
- CP grade **4**
- Ideal for use where there is a chance of fingers being trapped, i.e. nurseries, mental institutions etc.
- Avoids the necessity for finger guards on pull side of door
- Stainless steel, mill finish, stainless steel pin

Length x open width	2000 x 76 mm
Cat. No.	926.91.170



Order qty: 1 pc (2000 mm length)



A Stainless steel continuous hinge

- 1834 mm length
- Ideal for use on moveable door stops and lighter doors, where gaps would prove to be a hazard
- Medium duty
- 36 holes per hinge
- Stainless steel, mill finish, stainless steel pin

Length x open width	1834 x 51 mm
Cat. No.	351.13.010



Order qty: 1 pc (1834 mm length)

