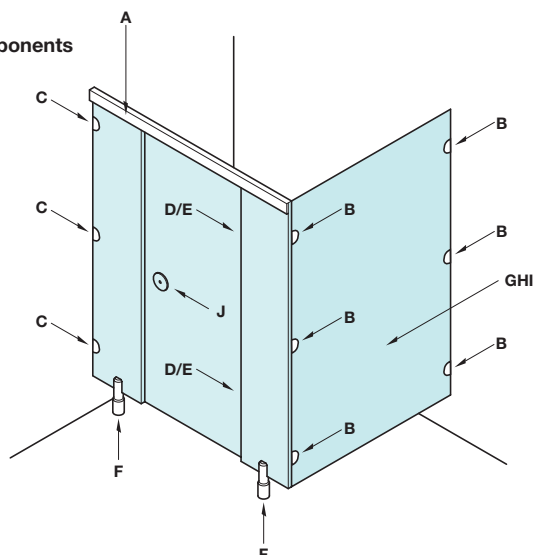


## • Application

- General purpose cubicles of chipboard, plywood, etc. construction where board thickness is normally 17-21 mm incorporating 1 mm thickness laminate facing

## Part detail of range of cubicles showing general position of components

- A - Headrail
- B - Channel brackets (set of 3)
- C - Angle brackets
- D/E - Hinges (pair)
- F - Cubicle support
- G/H/I - Toilet roll holder (not shown)
- J - Indicator bolt
- K - Open out keep (not shown)
- L - D handle (not shown)



**Item A.**  
Catalogue shows...  
'Supplied in two lengths -  
dependant on finish'  
Correct is  
'Supplied in 4m Lengths'

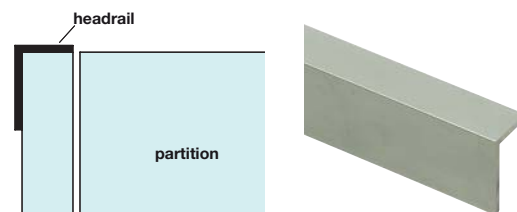
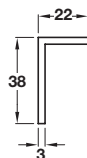
### A Headrail

- Screw fixed to top of pilasters - client to drill
- Supplied in 4m lengths
- Aluminium

Finish	Cat. No
Satin anodised	980.07.900
Black polyester powder coated	980.07.300

**Item A.**  
Length text removed from table

Order qty: 1 pc (4m length)



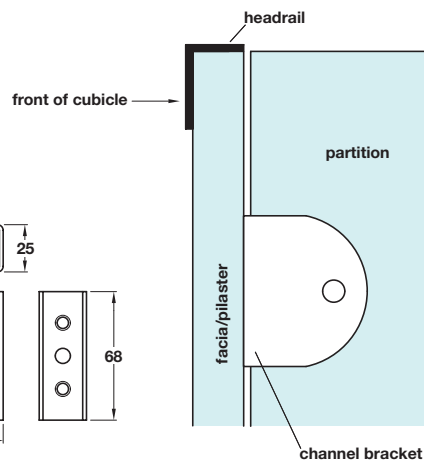
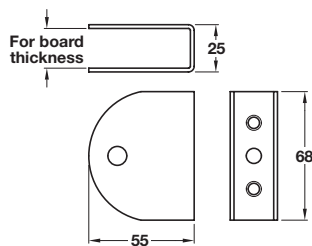
**Item A.**  
Text added

### B Channel bracket

- To suit board thicknesses 17-21 mm
- Supplied in sets of 3, complete with bush bolts and fixings
- To fix division panels to rear walls and front pilasters
- Suitable for matching modesty panel fixings
- Aluminium

Finish	Cat.No.
Satin anodised	980.07.910
Black polyester powder coated	980.07.310

Order qty: 1 set (pack of 3)

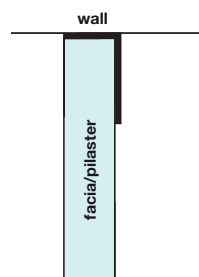
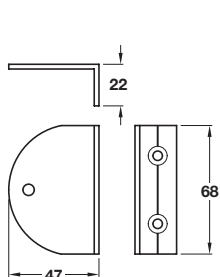


### C Open sided bracket

- To suit board thickness 17-21 mm
- Supplied in sets of 3, complete with fixings
- To fix end pilaster to wall
- Aluminium

Finish	Cat. No.
Satin anodised	980.07.912
Black polyester powder coated	980.07.312

Order qty: 1 set (pack of 3)



04.12.08/1\*