

The Disability Discrimination Act

Part three: Making your premises accessible to disabled people

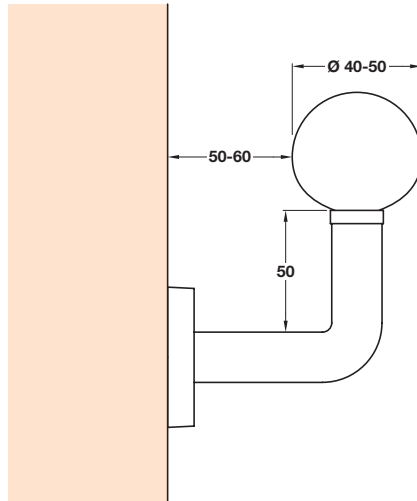
Handrails

It is stated that a handrail should be:

- Oval or circular profile and have a diameter of at least 40 mm but not greater than 50 mm
- Finished so as to provide a visual contrast with the surroundings
- Easy and comfortable to grip with no sharp edges, smooth and NOT cold to touch. There should be a clearance of 50 to 60 mm between the handrail and the adjacent wall surface

Handrail brackets should incorporate on either side of a fixed or semi-permanent ramp.

Handrails should extend for 300 mm beyond the bottom and top of the ramp.



For further information on the **Disability Discrimination Act**, please refer to the pages shown at the back of this catalogue

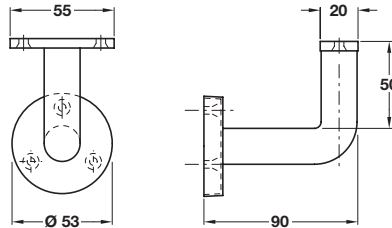
4

A Stainless steel handrail bracket

- Suitable for flat based handrails
- Concealed fixing
- Fixings included
- Grade 316 stainless steel

Finish	Cat. No.
Satin stainless steel	986.08.000
Polished stainless steel	986.08.001

Order qty: 1 pc



Satin stainless steel finish

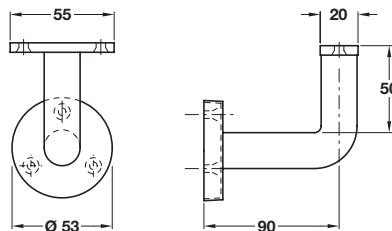


B Brass handrail bracket

- Suitable for flat based handrails
- Concealed fixing
- Fixings included
- Brass

Finish	Cat. No.
Polished brass	986.08.008

Order qty: 1 pc



Polished brass finish

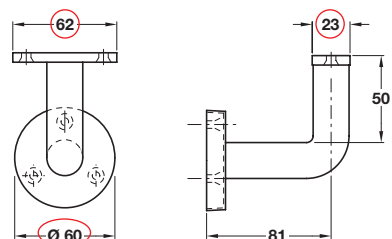


C Aluminium handrail bracket

- Suitable for flat based handrails
- Concealed fixing
- Fixings included
- Aluminium

Finish	Cat. No.
Polished anodised	986.08.009

Order qty: 1 pc



Item C.
Catalogue shows 55, 19 & Ø 50 mm
Correct dimensions are 62, 23 & Ø 60 mm

Polished anodised aluminium finish



TCH-A1 2008, HUK. Dimensional data not binding. We reserve the right to alter specifications without notice.