

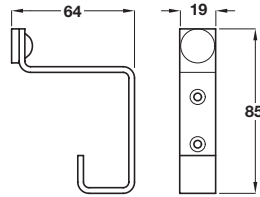
Satin stainless steel finish

A Buffered hat and coat hook

- Face fixing
- Fixings included
- Grade 316 stainless steel

Finish	Cat. No.
Satin stainless steel	843.84.060
Polished stainless steel	843.84.070

Order qty: 1 pc



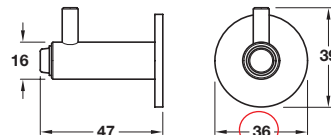
Satin stainless steel finish

B Buffered coat hook

- Concealed fixing
- Fixing screw and wall plug included
- Grade 316 stainless steel

Finish	Cat. No.
Satin stainless steel	842.48.071
Polished stainless steel	842.48.076

Order qty: 1 pc



Item B.
Catalogue shows 33 mm
Correct dimension is 36 mm



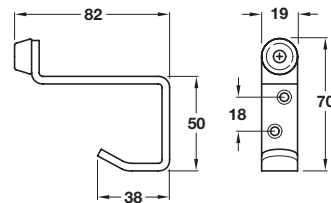
Satin stainless steel finish

C Buffered hat and coat hook

- Face fixing
- Fixings included
- Stainless steel

Finish	Cat. No.
Satin stainless steel	842.48.000
Polished stainless steel	842.48.090

Order qty: 1 pc



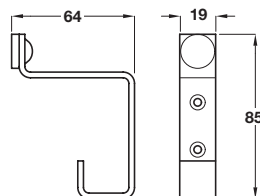
Polished brass finish

D Buffered hat and coat hook

- Face fixing
- Fixings included
- Brass

Finish	Cat. No.
Polished brass	843.84.860

Order qty: 1 pc



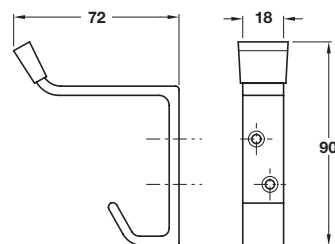
Satin anodised aluminium finish

E Buffered hat and coat hook

- Face fixing
- Fixings included
- Aluminium

Finish	Cat. No.
Satin anodised	843.84.900

Order qty: 1 pc



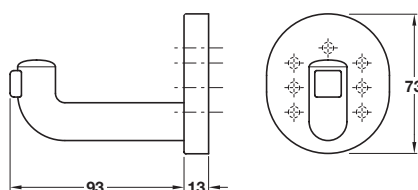
Dark blue finish

F Buffer coat hook

- Concealed fixing
- Fixings included
- Nylon

Finish	Cat. No.
Red	842.98.312
Black	842.98.316
Dark grey	842.98.318
White	842.98.319
Yellow	842.98.322
Dark blue	842.98.337

Order qty: 1 pc



21.07.09/1*