

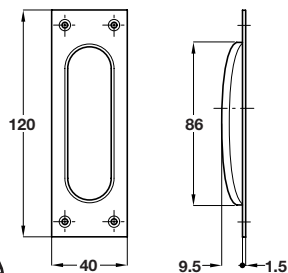
Satin stainless steel finish

A Flush pull handle

- 120 x 40 x 11 mm
- Suitable for sliding timber doors
- Fixings not included
- Stainless steel

Finish	Cat. No.
Satin stainless steel	902.01.300
Polished stainless steel	902.01.301

Order qty: 1 pc



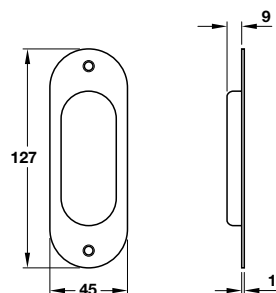
Satin stainless steel finish

B Flush pull handle

- 127 x 45 x 10 mm
- Suitable for sliding timber doors
- Fixings included
- Stainless steel

Finish	Cat. No.
Satin stainless steel	902.04.300

Order qty: 1 pc



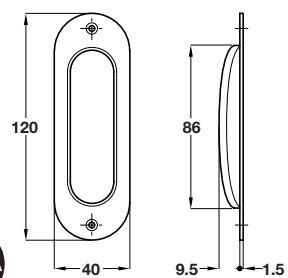
Satin stainless steel finish

C Flush pull handle

- 120 x 40 x 11 mm
- Suitable for sliding timber doors
- Fixings not included
- Stainless steel

Finish	Cat. No.
Satin stainless steel	902.00.300
Polished stainless steel	902.00.301

Order qty: 1 pc



Satin stainless steel finish

D Flush pull handle

- Ø 65 x 16 mm
- Secret fixing
- Fixings included
- Stainless steel

Item D.
Catalogue shows...
'1 pair'
Correct order qty is '1 pc'

Finish	Cat. No.
Satin stainless steel	902.00.520
Polished stainless steel	902.00.521

Order qty: 1 pc

