

### A Flush ring handle, to operate

- 90 x 90 x 15 mm
- To suit doors minimum **44 mm** thick
- Two patterns available. One with 8 mm square spindle, other with 8 mm square hole
- Can be used back to back or with lever handles on opposing side
- Fixings not included**
- Grade 304 stainless steel or aluminium

#### With 8 mm square spindle

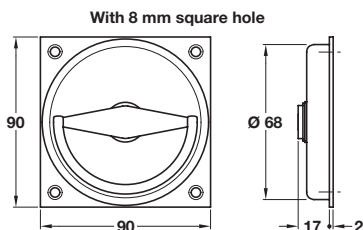
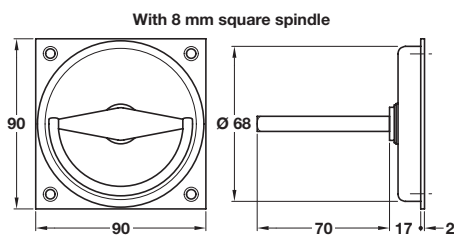
Finish	Cat. No.
Dull brushed stainless steel	902.00.540
Silver anodised aluminium	904.00.341

Order qty: 1 pc

#### With 8 mm square hole

Finish	Cat. No.
Dull brushed stainless steel	902.00.550
Silver anodised aluminium	904.00.351

Order qty: 1 pc



Dull brushed stainless steel finish

K W S



**Item A.**  
Catalogue shows...  
'Fixings included'  
Correct is  
'Fixings not included'

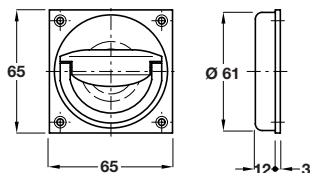
4

### B Flush ring handle, to operate

- 65 x 65 x 15 mm
- To suit door minimum **44 mm** thick
- 8 mm spindle included for mortice latch operation
- Fixings included
- Brass

Finish	Cat. No.
Satin nickel plated	901.03.906
Polished brass	901.03.908

Order qty: 1 pc



Polished brass finish

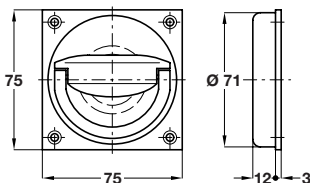


### C Flush ring handle, to operate

- 75 x 75 x 15 mm
- To suit door minimum **44 mm** thick
- 8 mm spindle included for mortice latch operation
- Fixings included
- Brass

Finish	Cat. No.
Satin nickel plated	910.37.008
Polished brass	910.37.017

Order qty: 1 pc



Polished brass finish

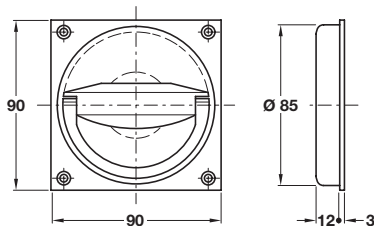


### D Flush ring pull handle, to operate

- 90 x 90 x 15 mm
- To suit door minimum **44 mm** thick
- 8 mm spindle included for mortice latch operation
- Fixings included
- Brass

Finish	Cat. No.
Satin nickel plated	901.03.916
Polished brass	901.03.918

Order qty: 1 pc



Polished brass finish

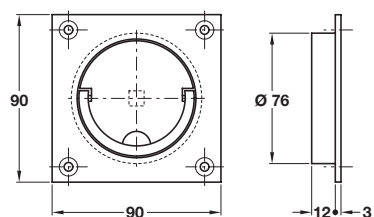


### E Squash court handle, to operate

- 90 x 90 x 15 mm
- To suit door minimum **44 mm** thick
- 8 mm spindle included for mortice latch operation
- Fixings included
- Brass

Finish	Cat. no.
Satin nickel plated	901.03.816

Order qty: 1 pc



Satin nickel finish



28.05.09/1\*