

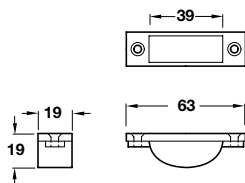
Polished brass finish

A Easy clean socket

- To suit maximum Ø 13 mm shoot size
- Supplied with fittings for wood or stone
- Zinc diecast

Finish	Cat. No.
Polished brass	900.17.990
Satin nickel	900.17.991
Satin anodised	911.62.051

Order qty: 1 pc



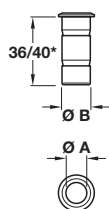
Polished chrome finish

B Dust excluding socket

- Spring loaded plunger
- Cast in pattern
- To suit shoot bolts Ø 9 to 20 mm
- Brass

Ø A	Ø B	Polished brass	Polished chrome
9 mm	13 mm	911.62.061	911.62.060
11 mm	15 mm	911.62.063	911.62.062
13 mm	17 mm	911.62.065	911.62.064
15 mm	19 mm	911.62.067	911.62.066
20 mm	25 mm	911.62.069*	911.62.068*

Order qty: 1 pc



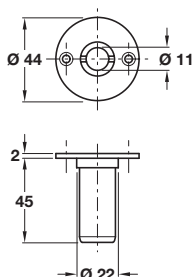
Polished brass finish

C Dust excluding socket

- Spring loaded plunger
- Screw pattern
- To suit shoot bolts maximum Ø 11 mm
- Fixing screws included
- Brass

Finish	Cat. No.
Polished brass	911.62.496
Satin nickel-plated	911.62.497

Order qty: 1 pc



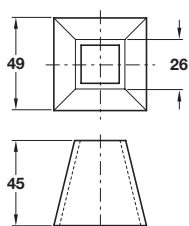
Galvanized finish

D Square bolt socket

- Cast in pattern
- To suit 5/8" (16 mm) square shoot bolts
- Galvanized steel

Cat. No.	911.62.498
----------	------------

Order qty: 1 pc



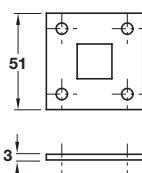
Galvanized finish

E Square bolt receiver plate

- Soffit fixing plate
- To suit 5/8" (16 mm) square shoot bolts
- Galvanized steel

Cat. No.	911.62.499
----------	------------

Order qty: 1 pc



Galvanized finish

F Square bolt receiver staple

- Face fixing plate
- To suit 5/8" (16 mm) square shoot bolts
- Galvanized steel

Cat. No.	911.62.500
----------	------------

Order qty: 1 pc

