

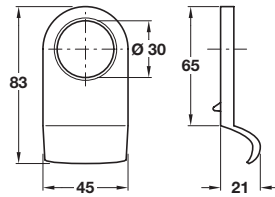


### A Round cylinder pull

- Cylinder holds pull in place
- Polished brass with PVD zirconium coating

| Finish             | Cat. No.   |
|--------------------|------------|
| PVD polished brass | 900.56.865 |

Order qty: 1 pc



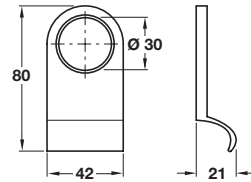
Polished brass finish

### B Round cylinder pull

- Cylinder holds pull in place
- Brass

| Finish          | Cat. No.   |
|-----------------|------------|
| Polished brass  | 901.56.361 |
| Satin chrome    | 901.56.364 |
| Polished chrome | 901.56.362 |

Order qty: 1 pc



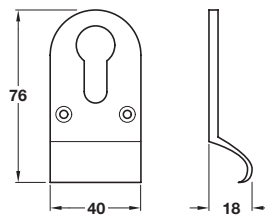
Polished brass finish

### C Europrofile cylinder pull

- Face fixing, fixing screws included
- Brass

| Finish          | Cat. No.   |
|-----------------|------------|
| Polished brass  | 901.52.371 |
| Satin chrome    | 901.52.374 |
| Polished chrome | 901.52.372 |

Order qty: 1 pc



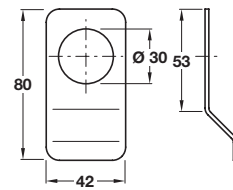
Polished chrome finish

### D Round cylinder pull

- To suit round rim cylinders
- Cylinder holds pull in place
- Brass or steel

| Finish                   | Cat. No.   |
|--------------------------|------------|
| Satin stainless steel    | 902.56.800 |
| Polished stainless steel | 902.56.801 |

Order qty: 1 pc



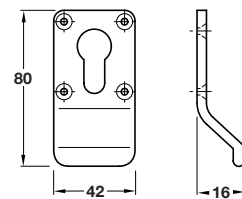
Satin stainless steel finish

### E Europrofile cylinder pull

- Face fixing, fixing screws included
- Stainless steel

| Finish                   | Cat.No.    |
|--------------------------|------------|
| Satin stainless steel    | 902.52.840 |
| Polished stainless steel | 902.52.841 |

Order qty: 1 pc



Satin stainless steel finish

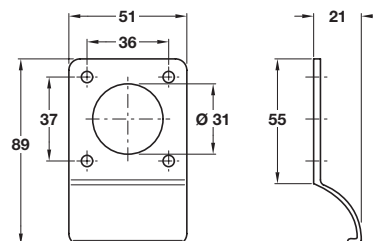
## Kirkpatrick Ltd.

### F Round cylinder pull

- Face fixing, fixing screws included
- Malleable iron

| Finish               | Cat. No.   |
|----------------------|------------|
| Black powder coated  | 900.56.843 |
| Pewter powder coated | 900.56.849 |

Order qty: 1 pc



**Note:** Due to the manufacturing process, the dimensions given may vary.



Black finish

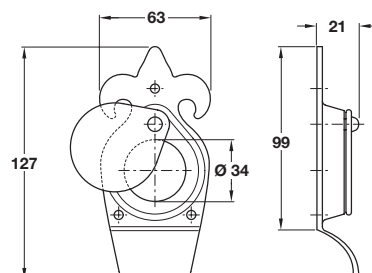
## Kirkpatrick Ltd.

### G Round cylinder pull with swing cover

- Face fixing, fixing screws included
- Malleable iron

| Finish              | Cat. No.   |
|---------------------|------------|
| Black powder coated | 900.56.833 |

Order qty: 1 pc



**Note:** Due to the manufacturing process, the dimensions given may vary.



Black finish