

## A Soss 'Crimestall' hinge 218

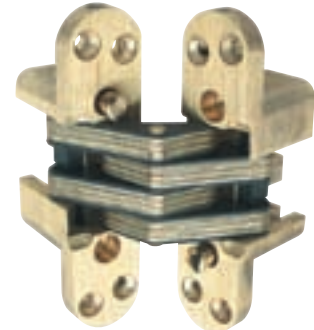
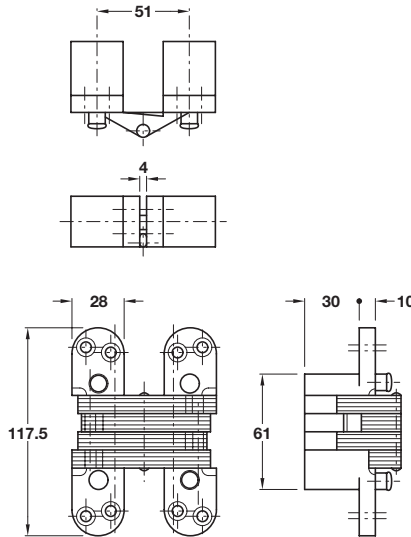
### • Application:

Version of Soss 218 hinge incorporating dog bolts with hardened steel rollers, for use on external open outward or other doors where security needs to be enhanced to prevent sawing through the hinge

- Angle of opening 180°
- To suit door thickness **41-45 mm**
- 3 or 4 hinges required depending on height, width and weight of door
- Maximum door width 900 mm
- Ø 4.5 x 40 mm fixing screws included
- Zinc alloy body with plated steel links and hardened steel rollers

Body	Links	Cat. No.
Brass	Brass	927.50.105
Satin nickel	Satin nickel	927.50.107

Order qty: 1 pc



Brass plated finish shown

## B Soss concealed door closer kit

### • Application:

Device provides closing for hinged timber and metal doors by means of an adjustable high grade helical spring concealed within the door panel

### • No latch snap action

- Set includes 3x 'Soss 218' concealed mortise hinges, one incorporating the spring mechanism

### • Range:

Door thickness **41-46 mm**  
 Maximum door height **2200 mm**  
 Maximum door width **900 mm**  
 Maximum door weight **25 kg**  
 Suitable for interior doors only  
 Unhanded

### • Features:

Available with exposed components either brass or satin nickel plated  
 Successfully included in **1/2 hour** fire test (certificate available on request)  
 Adjustable closing speed

### • CAUTION:

if door panel needs to be held back or opened further than 100°, then tension on the spring should be reduced to prevent deterioration of the mechanism

### Lubrication is required at installation stage and regularly thereafter

Door construction must allow for 240 mm depth of spring unit x Ø 25.5 mm

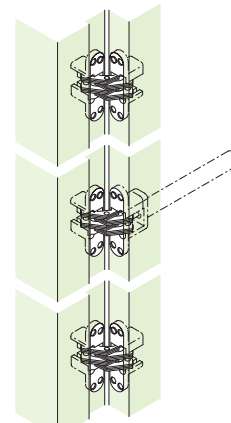
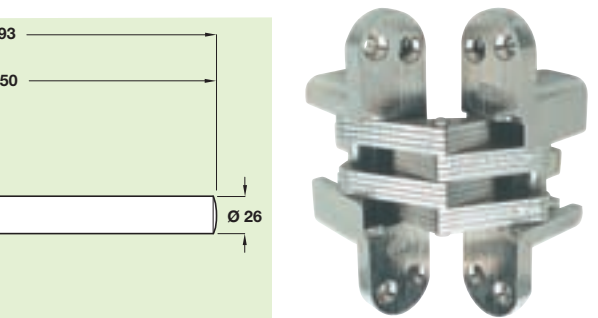
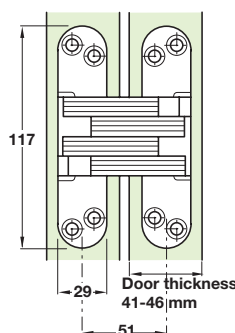
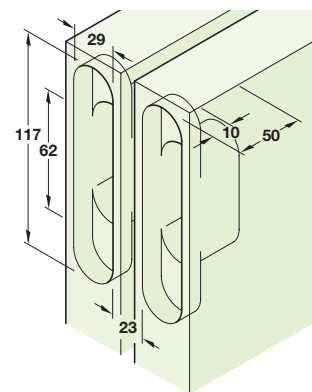
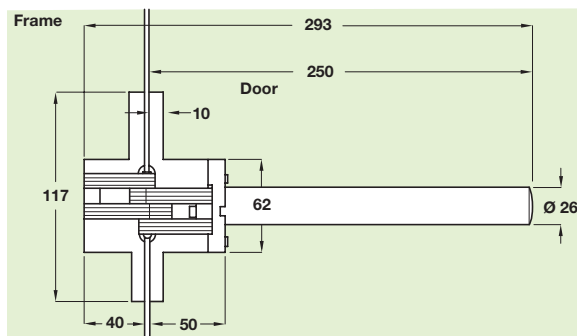
### • Fixing:

Closer hinge should be sited mid height  
 Hinges must be installed plumb to achieve maximum closing performance  
 Installation templates are recommended, shown on page 64

- Zinc alloy with plated steel links

Finish	Cat. No.
Satin brass plated	927.50.205
Bright nickel plated	927.50.207

Order qty: 1 set



Bright nickel finish shown