

Continuous Hinges

Stainless Steel, Brass, Aluminium

Regular lubrication required, unless marked 'maintenance free'.
Fixing screws are not included.

Important: The logo shown indicates the type and size of screw required, which must be ordered separately



3

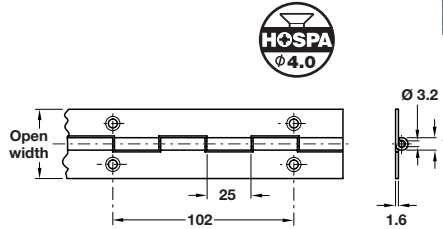


A Stainless steel continuous hinge

- 1834 mm length
- Available in 2 widths: **39** and **51** mm
- Medium duty
- 36 holes per hinge
- Stainless steel, mill finish, stainless steel pin

Open width	Cat. No.
39 mm	351.13.000
51 mm	351.13.010

Order qty: 1 pc (1834 mm length)



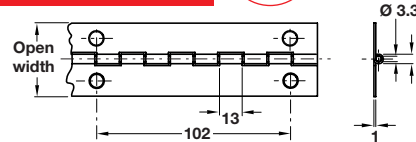
B Stainless steel continuous hinge

- 1834 mm length
- Available in 3 widths: **32**, **38** and **51** mm
- Light duty
- 36 holes per hinge
- CP grade **4**
- Polished stainless steel, stainless steel pin

Open width	Cat. No.
32 mm	351.14.000
38 mm	351.14.010
51 mm	351.14.020

Order qty: 1 pc (1834 mm length)

Item B.
Catalogue shows screw required is Hospa Ø 5.0 mm
Correct screw size required is Hospa Ø 4.0 mm

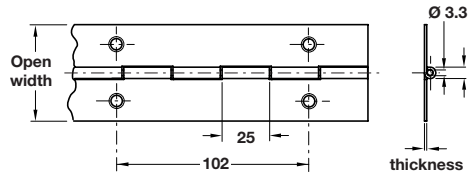


C Brass continuous hinge

- 1834 mm length
- Available in 2 widths: **38** and **51** mm
- Light/medium duty
- 36 holes per hinge
- Polished brass, brass pin

Open width	Thickness	Cat. No.
38 mm	0.9 mm	351.16.800
51 mm	1.2 mm	351.16.810

Order qty: 1 pc (1834 mm length)

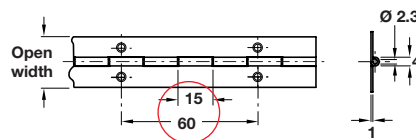


D Aluminium continuous hinge

- 1834 mm length
- Available in 3 widths: **25**, **32** and **38** mm
- Light duty
- 52 holes per hinge
- Self colour aluminium, stainless steel pin

Open width	Cat. No.
25 mm	351.15.900
32 mm	351.15.910
38 mm	351.15.920

Order qty: 1 pc (1834 mm length)



Item D.
Catalogue shows 18 mm and 72 mm
Correct dimensions are 15 mm and 60 mm

Hinge wood screws

Countersunk head with cross slot
Stainless steel



Ø x thread length	Cat. No.
4.0 x 20 mm	● 014.32.922
5.0 x 30 mm	● 014.32.941
6.0 x 30 mm	† 014.32.962

Order qty: Multiples of 200 pcs

22.07.09/2*