

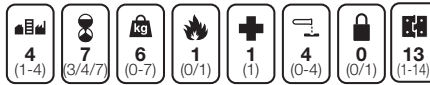
Stainless Steel Butt Hinges

Phoenix Range - Shrouded Bearing

Hinge **A** has obtained Certifire approval.
Maintenance free, 25 year performance guarantee.
Fixings for timber included.

Refer to pages **2-3** for information on **BS EN 1935**,
hinge grades and classification

BS EN 1935

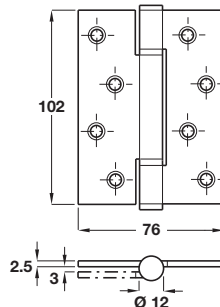


A Stainless steel, fixed pin, 3 knuckle, shrouded bearing butt hinge

- Staggered hole pattern
- Grade **13** BS EN 1935
- Maximum adjusted door weight **120 kg**
- Minimum door thickness **35 mm**
- Square and radius corners
- Maintenance free
- **25** year performance guarantee
- Certifire approved; certificate no. CF351 mins
- Ø 5 x 30 mm wood screws included
- Grade 304 stainless steel

Length x width	102 x 76 mm	
Finish	Satin	Polished
Square corners	926.91.460	926.91.461
Radius corners	926.91.470	926.91.471

Order qty: 1 pc



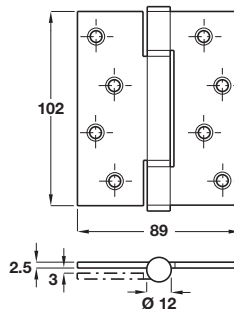
Satin stainless steel finish shown
Square corners

B Stainless steel, fixed pin, 3 knuckle, shrouded bearing butt hinge

- Staggered hole pattern
- Maximum adjusted door weight **100 kg**
- Minimum door thickness **44 mm**
- Square and radius corners
- Maintenance free
- **25** year performance guarantee
- Ø 5 x 30 mm wood screws included
- Grade 304 stainless steel

Length x width	102 x 89 mm	
Finish	Satin	Polished
Square corners	926.91.480	926.91.481
Radius corners	926.91.490	926.91.491

Order qty: 1 pc



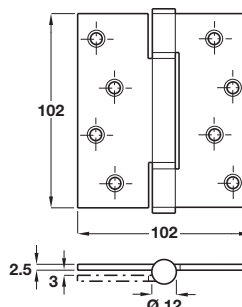
Satin stainless steel finish shown
Square corners

C Stainless steel, fixed pin, 3 knuckle, shrouded bearing butt hinge

- Staggered hole pattern
- Maximum adjusted door weight **100 kg**
- Minimum door thickness **44 mm**
- Square and radius corners
- Maintenance free
- **25** year performance guarantee
- Ø 5 x 30 mm wood screws included
- Grade 304 stainless steel

Length x width	102 x 102 mm	
Finish	Satin	Polished
Square corners	926.91.500	926.91.501
Radius corners	926.91.510	926.91.511

Order qty: 1 pc

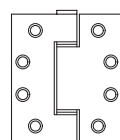


Satin stainless steel finish shown
Square corners

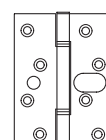
Variants available to order, subject to quantity:

- ANSI hole pattern
- Dog bolt (fixed pin only)
- Conductor (fixed pin only)
- Anti-ligature

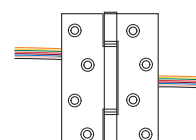
Also available in mild steel.



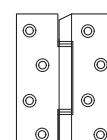
ANSI hole pattern



Dog bolt



Conductor



Anti-ligature