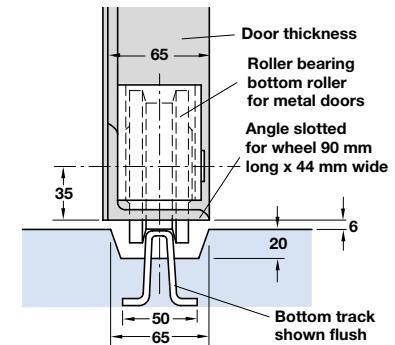
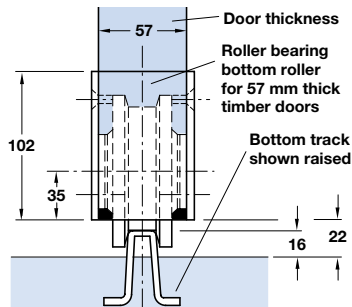
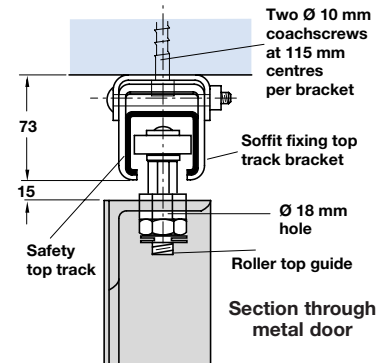
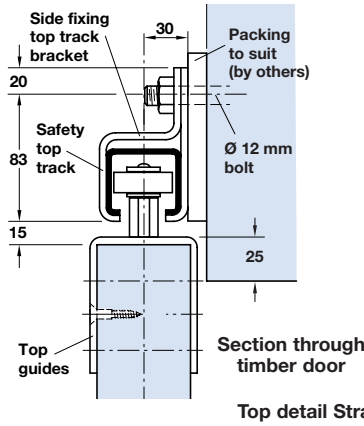
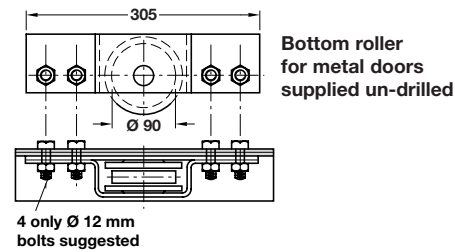
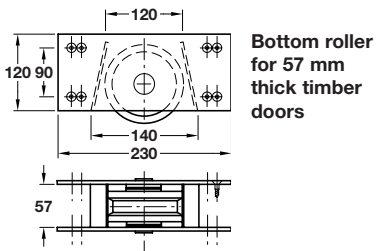
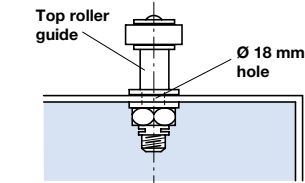
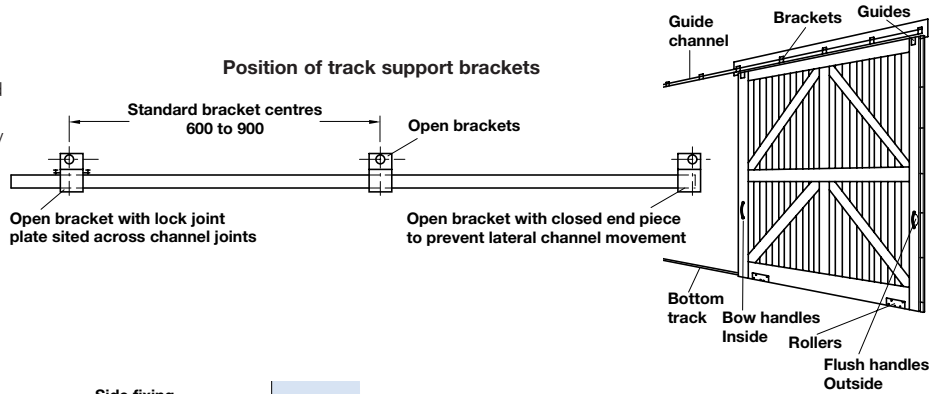


- Application:** Bottom rolling industrial and commercial straight sliding timber or metal doors
Max. weight per panel **500 kg**
- Consider wind pressure in exposed positions and method of stopping doors
- 2 guides and 2 rollers per door (more guides may be used for large doors or exposed areas)
- Available to order at short notice**
- Application with double parallel track brackets with lateral adjustment shown below



- Series 880 parallel top track brackets** to suit bottom rolling systems Straightaway 720 and 880
- Straightaway 720** shown on page 75
- Min. door thickness **40 mm**
Max. door thickness **60 mm**
- Weight capacity not altered for bottom roller systems
- Bracket centres 600-900 mm
- Available to order at short notice**

A Double open wall bracket

Side fixing. Galvanized pressed steel

Cat. No. 941.80.080

Order qty: 1 pc

B Double lock-joint wall bracket

Side fixing. Galvanized pressed steel

Cat. No. 941.80.081

Order qty: 1 pc

C Closed end piece, unhandled

2 per bracket required. Galvanized pressed steel

Cat. No. 941.80.082

Order qty: 1 pair

