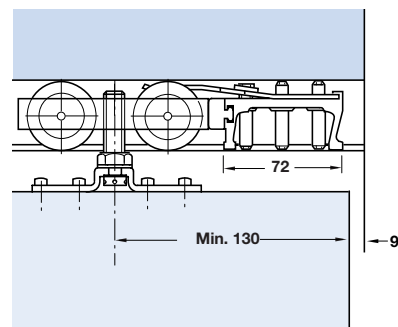
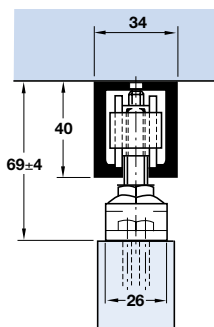


- **Application:** Special version of Junior 80 for use where corrosive atmosphere or high humidity prevail

• **Range**

Max. door weight **80 kg,**
 Min. door thickness **26 mm,**
 Max. door height normally **2.3 m**

- **HAWA Junior 80 Inox fitting set for 1 door panel** comprises fittings **B, C, D** and **E**
- **Tracks are not included in the fitting set and must be ordered separately**



For ancillary door fittings, locks, handles, bolts, seals, etc. see pages 4-6

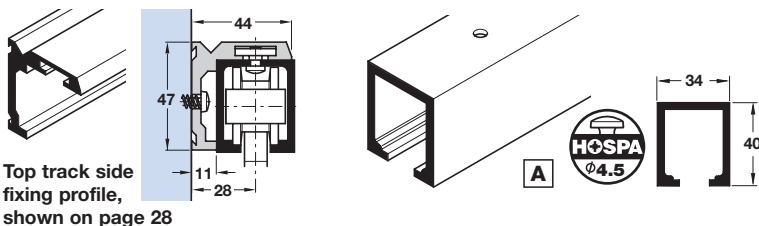
A Junior 80 top track

With screw-holes for soffit fixing. High-grade corrosion resisting aluminium alloy. Silver anodised 12 microns.

Two top tracks are mounted side by side for double or multiple doors

Length	Cat. No.
2.0 m	940.80.200
2.5 m	940.80.250
3.0 m	940.80.300

Order qty: 1 pc (2.0, 2.5 or 3.0 m length)



Top track side fixing profile, shown on page 28

Junior 80 Inox fitting set

B Trolley hanger. Stainless steel axles, high-grade polyamide, tandem roller. Stainless steel mounting bracket

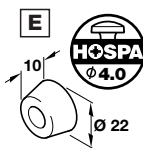
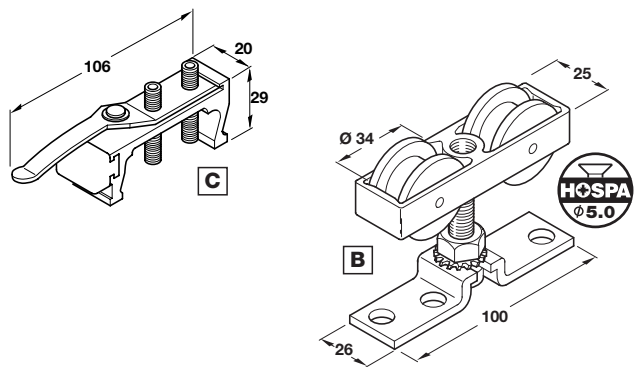
C Track stopper. For adjustable mounting in top track. Special alloy housing with stainless steel spring and rubber buffer. Adjustable retaining force

D Guide, rattle proof. For screw mounting to floor. Black plastic

E Rubber buffer. Screw fixing

For 1 door	
B Trolley hanger	2 pcs
C Track stopper	1 pc
D Guide	1 pc
E Rubber buffer	1 pc
Cat. No.	940.80.003

Order qty: 1 set

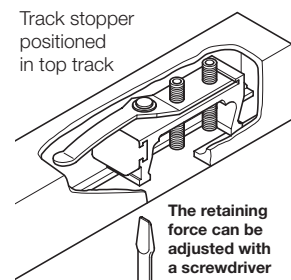
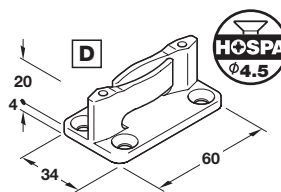
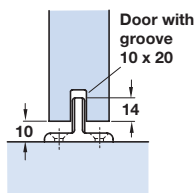


Important mounting note: If the sliding door is required to stop at both ends, we recommend installing an additional track stopper **C**

C Additional track stopper

Cat. No.	940.80.042
----------	------------

Order qty: 1 pc



Alternative bottom guiding, corrosion resisting:

F Guide

Stainless steel plate with brass roller

Cat. No.	930.10.000
----------	------------

Order qty: 1 pc (2 pcs required per panel)

G Channel

Pre-drilled for countersunk screws. Stainless steel

Length	2.5 m
Cat. No.	943.26.925

Order qty: 1 pc (2.5 m length)

