

# Fittings for Sliding Folding Interior Doors

## Foldaside 240 Endfold

**Foldaside butt hinges** for door thickness 30-40 mm:

**A Stainless steel butt hinge**

76 x 50 mm. Fixing screws included. Un-washed with stainless steel fixed spun pin

<b>Max. adj. door weight</b>	<b>20 kg</b>
Satin	921.08.104

Order qty: 1 pc

**B Brass butt hinge**

76 x 51 mm. Un-washed with brass hinge

Finish	Cat. No
Self colour	921.08.408

Order qty: 1 pc

**C Extruded brass butt hinge**

76 x 51 mm. Double phosphor bronze washers with brass pin

<b>BS EN 1935 grade 6</b>	Cat. No
Polished	926.90.058

Order qty: 1 pc

**Foldaside butt hinges** for door thickness 40-45 mm:

**D Stainless steel butt hinge**

102 x 76 mm. Thrust bearing washers to each joint. Satin or polished stainless steel or electrophoretic brass-plated stainless steel

<b>BS EN 1935 grade 13</b>	Cat. No.
Satin stainless steel	921.08.140
Polished stainless steel	926.91.041
Brass-plated	921.08.159

Order qty: 1 pc

**E Stainless steel butt hinge**

102 x 76 mm. Drilled ANSI pattern. Two high quality ball bearing race joints. Stainless steel

<b>BS EN 1935 grade 11</b>	Cat. No.
Satin stainless steel	926.92.100
Polished stainless steel	921.08.621

Order qty: Multiples of 2 pcs

**F Brass butt hinge**

102 x 73 mm. Unwashed with stainless steel pin

<b>Max. adj. door weight</b>	<b>35 kg</b>
Bright polished	921.08.024

Order qty: 1 pc

**G Jamb and floor pivot set**

For equal width door suites

**Important: If all door leaves in the suite must be equal width, this fitting may be used for the jamb to first leaf joint, but recommended max. load rating must be strictly adhered to**

This pivot set may also be used with Foldaside 340 but max. door weight 40 kg

Top, jamb fixing. Bottom, floor mounted. Steel

Cat. No	941.36.000
---------	------------

Order qty: 1 pc

**H Knob slide surface bolt, light duty, 160 mm**

Surface or semi-recessed fixing to bottom of door. Straight and angled keepers included. Brass

Finish	Cat. No
Polished brass	900.17.945
Satin nickel plated	900.17.946

Order qty: 1 pc

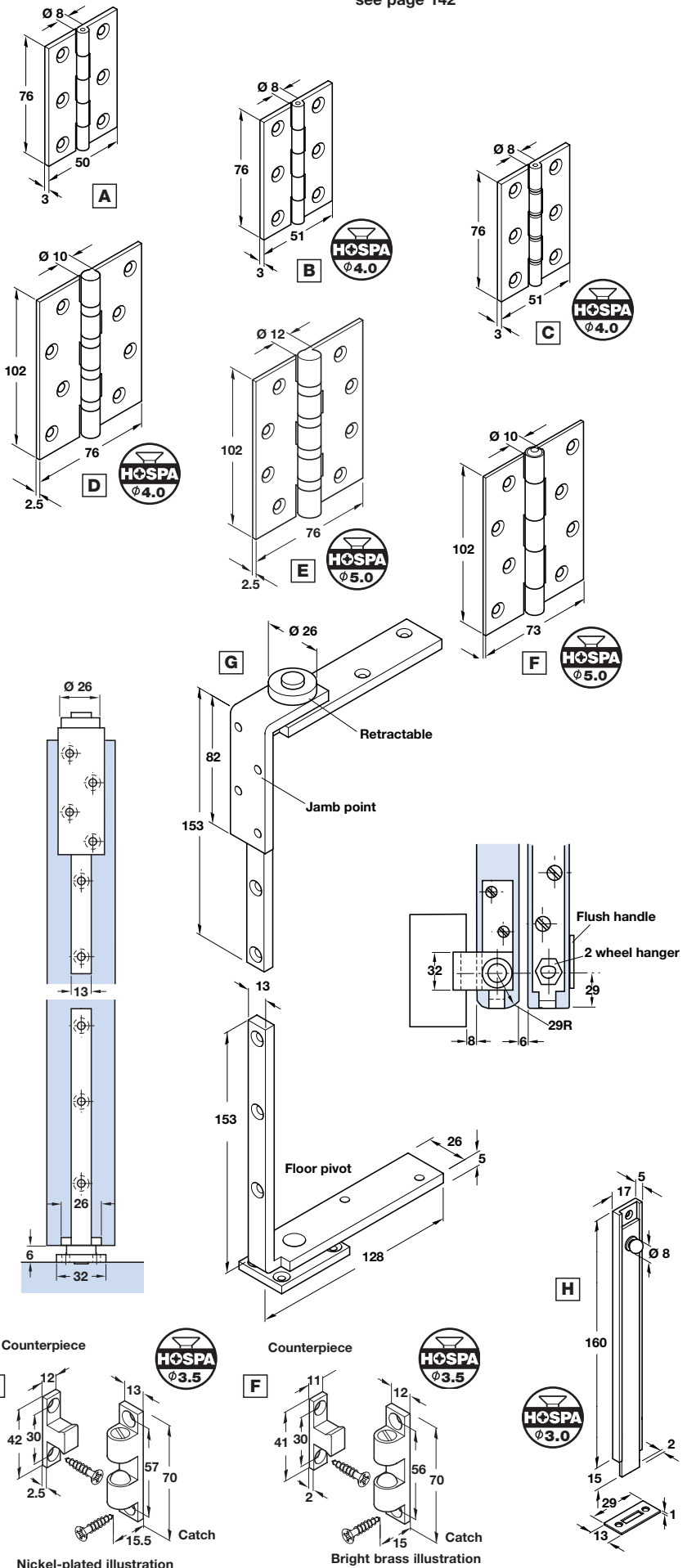
**F Twin ball catch**

To act as holdback catch on access door or to prevent door panel drift. Tension adjustable with a screw-driver. Solid chrome steel balls. Brass catch and counterpiece

Finish	Cat. No.
Bright brass	244.20.017
Nickel-plated	244.20.639

Order qty: 1 pc

For ancillary door fittings, hinges and locks etc, see page 142



TCH-A1 2008, HUK. Dimensional data not binding. We reserve the right to alter specifications without notice.