

Fittings for Straight Sliding Timber Cabinet Doors

Light Duty Top Guides and Bottom Rollers

- Application:** General purpose furniture
- Range:**
 - Using bottom roller **F** or **G** with track **H**
Max. door weight **12 kg**. Min. door thickness **16 mm**
 - Using bottom roller **I** with track **J**
Max. door weight **25 kg**. Min. door thickness **16 mm**

For ancillary door hardware i.e. locks, handles and bolts etc. refer to page 19

A Top guide channel

Press fit, with flanged edges. To suit guide **C**. Plastic

Length	Brown	White
3.0 m	404.15.101	404.15.709

Order qty: 1 pc (3.0 m length)

B Guide retainer

Natural coloured plastic. Spring loaded

Cat. No.	404.06.004
----------	------------

Order qty: 1 pc (order 2 pcs per door)

C Guide

Press fit, with spring loaded catch. To suit top guide channel **A**. Plastic

Colour	Brown	White
Cat. No.	404.06.102	404.06.700

Order qty: 1 pc (order 2 pcs per door)

D Top guide channel

Press-fit, with flanged edges. To suit guide **E**. Plastic

Length	Brown	White
3.0 m	404.13.100	404.13.700

Order qty: Multiples of **3.0 metres**

E Guide, retractable

Press fit, with catch engaging at 5 or 8 mm. To suit top guide channel **D**. Plastic

Colour	Brown	White
Cat. No.	404.07.118	404.07.716

Order qty: 1 pc (order 2 pcs per door)

Light duty bottom rollers:

F Bottom roller, max door weight 12 kg

Press fit, with steel spindle and nylon roller. To suit support track **H**. Plastic

Colour	Brown	White
Cat. No.	404.08.115	404.08.713

Order qty: 1 pc (order 2 pcs per door)

G Bottom roller, max door weight 12 kg

Press fit, with adjustable spindle for vertical adjustment and nylon roller. To suit support track **H**. Plastic

Colour	Black
Cat. No.	404.08.350

Order qty: 1 pc (order 2 pcs per door)

H Support track

Press fit. To suit bottom rollers **F** or **G**. Plastic

Colour	Brown	White
Cat. No.	404.09.103	404.09.701

Packing: 1 pc (3.0 m length)

Alternative bottom roller and track :

I Bottom roller, max. door weight 25 kg

Press fit, with toughened steel spindle and ball-type roller. To suit support track **J**. White nylon

Cat. No.	404.08.446
----------	------------

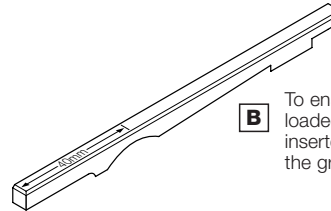
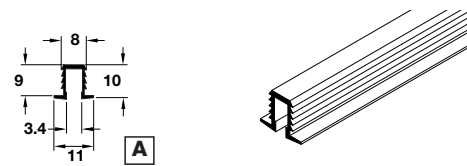
Order qty: 1 pc (order 2 pcs per door)

J Support track

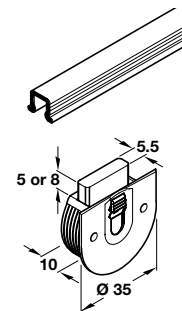
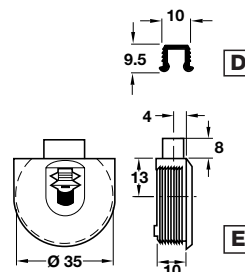
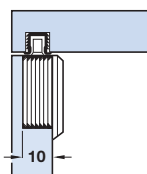
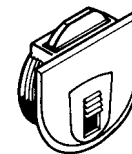
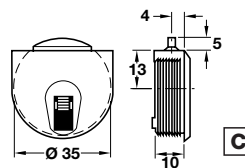
Press fit, with flanged edges. To suit bottom roller **I**. Plastic

Length	Brown	White
3.0 m	404.09.158	404.09.756

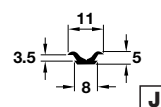
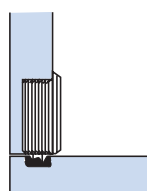
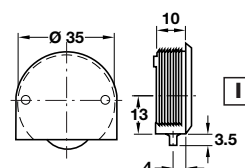
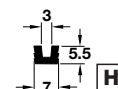
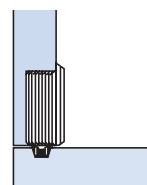
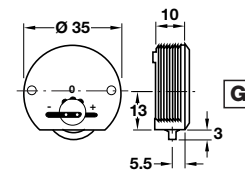
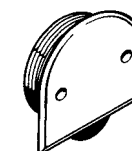
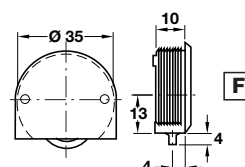
Order qty: Multiples of **3.0 metres**



To ensure controlled engagement of the spring loaded catch on the upper guide it should be inserted before the guide track is pressed into the groove



Please note:
Channel **D** is priced and sold in metres
Please order in multiples of metre quantity shown
3.0 metres = 1 length



Please note:
Track **J** is priced and sold in metres
Please order in multiples of metre quantity shown
3.0 metres = 1 length