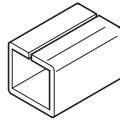


A Spindle converter

- To convert 8 mm spindle to 10 mm
- Bright steel

Cat. No.	909.40.502
----------	------------

Order qty: 1 pc

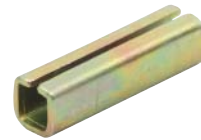
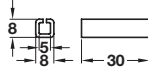


B Spindle converter

- To convert 5 mm spindle to 8 mm
- Steel

Cat. No.	909.40.600
----------	------------

Order qty: 1 pc



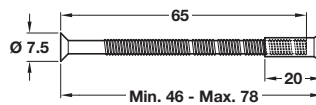
Item C.
Catalogue shows...
'Nickel plated steel screw with brass sleeve'
Correct text is 'Nickel plated steel screw with sleeve'

C M4 bolt and sleeve

- For use with roses and escutcheons
- To suit doors **35-60 mm** thick
- Nickel plated steel screw with sleeve

Length	Door thickness	Cat. No.
Max. 78 mm	35-60 mm	909.46.126

Order qty: 1 pair



D Fusital slotted grub screw

- For use with lever/knob handle
- Ø 6 mm
- Steel

Cat. No.	909.02.990
----------	------------

Order qty: 1 pc



E FSB piercing grub screw

- For use with FSB lever/knob handles
- Ø 6 mm
- Steel

Cat. No.	909.90.540
----------	------------

Order qty: 1 pc



F StarTec piercing grub screw

- For use with StarTec lever/knob handle
- Ø 6 mm
- Steel

Cat. No.	909.46.090
----------	------------

Order qty: 1 pc



G Standard piercing grub screw

- For use with lever/knob handle
- Ø 6 mm
- Steel

Cat. No.	909.00.958
----------	------------

Order qty: 1 pc



H Bolt through fixing screw

- 50, 60 and 70 mm x Ø 4.2 mm
- To suit doors **42-46, 52-56** and **62-66 mm** thick
- 2 required per rose
- Zinc plated steel

Length	Door thickness	Cat. No.
50 mm	42-46 mm	909.90.746
60 mm	52-56 mm	909.90.748
70 mm	62-66 mm	909.90.752

Order qty: 1 pc

