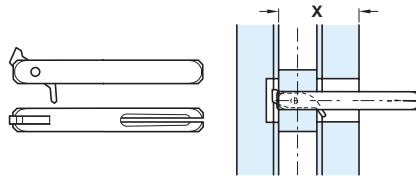


A Half spindle

- For use with lever/knob handle on one side
- 8 mm square
- To suit doors **22-28 mm** and **26-37 mm**
- Zinc plated high grade alloy steel

Length	Dim 'x'	Cat. No.
60 mm	22-28 mm	909.87.600
67 mm	26-37 mm	909.87.601

Order qty: 1 pc

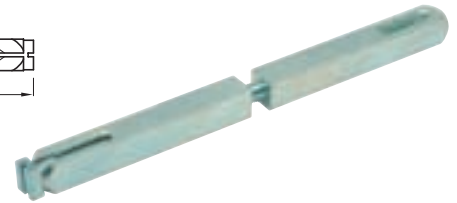
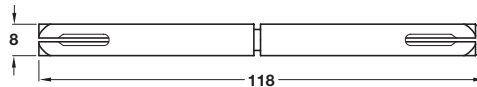


B Split spindle

- For use with split follower locks
- 8 mm square
- To suit doors upto **54 mm** thick
- Zinc plated high grade alloy steel

Length	Cat. No.
118 mm	909.83.711

Order qty: 1 pc

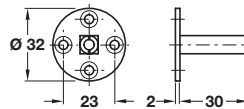


C Taylors spindle

- For use with lever/knob handle to fix dead
- 8 mm square slotted spindle
- Fixing screws included
- Bright zinc plated high-grade alloy steel

Cat. No.	909.00.959
----------	------------

Order qty: 1 pc

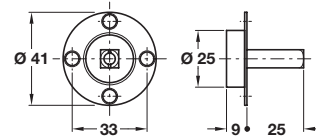


D Fixed dead mount with spindle

- For use with half sets of levers or knobs to fix dead
- 8 mm square slotted spindle
- Fixing screws included
- Self colour brass/zinc plated high-grade alloy steel

Cat. No.	909.00.960
----------	------------

Order qty: 1 pc



E Fixed dead mount

- For use with pairs of levers or knobs to fix dead
- For use with 8 mm square spindle
- Fixing screws included
- Self colour brass

Cat. No.	909.00.961
----------	------------

Order qty: 1 pc

