

Recommended mortice locks for knob furniture are shown in **Section 2** on pages **82-83**

Spindle type	Compatibility rating
Plain spindle	★
Piercing spindle	★★
Slotted spindle	★★★
Stabil spindle	★★★★

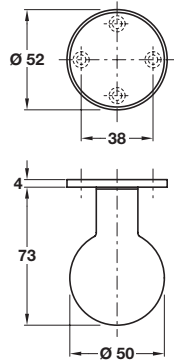
See page **123** for details
For full explanation see page **2**

A Spherical door knob, Ø 50 mm

- Pair of spherical knobs on **unsprung** concealed fixing roses
- Grub screw fixing on 8 mm square spindle
- Fixings included
- To suit doors **35-54 mm** thick
- 316 stainless steel
- Matching escutcheons available, see page **189**
- Spindle type, see page **123** for details
- For recommended locks, see **Section 2** pages **82-83**

Finish	Cat. No.
Satin stainless steel	903.70.702

Order qty: 1 pair



Satin stainless steel finish

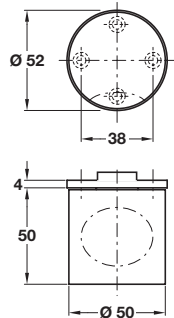


B Cylindrical door knob, Ø 50 mm

- Pair of spherical knobs on **unsprung** concealed fixing roses
- Grub screw fixing on 8 mm square spindle
- Fixings included
- To suit doors **35-54 mm** thick
- 316 stainless steel
- Matching escutcheons available, see page **189**
- Spindle type, see page **123** for details
- For recommended locks, see **Section 2** pages **82-83**

Finish	Cat. No.
Satin stainless steel	903.70.704

Order qty: 1 pair



Satin stainless steel finish



C FSB 0829 door knob, Ø55 mm

- Single knob (2 pcs required for set)
- Grub screw fixing on 8 mm square spindle (order spindle separately)
- Pair of **unsprung** concealed fixing roses (order roses separately)
- Fixing screws not included, see page **124**
- To suit doors **35-54 mm** thick
- 304 stainless steel
- Matching escutcheons available, see page **193**
- Spindle type, see page **123** for details
- For recommended locks, see **Section 2** pages **82-83**

Door knob

Finish	Cat. No.
Satin stainless steel	902.38.210

Order qty: 1 pc

Unsprung roses

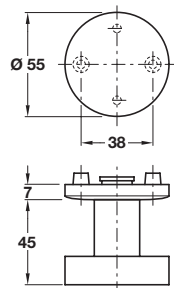
Finish	Cat. No.
Satin stainless steel	902.50.050

Order qty: 1 pair

Stabil spindle

Cat. No.	
909.76.200	

Order qty: 1 pc



Satin stainless steel finish



Turnable knob handles are made and supplied by FSB as female sections. Knobsets are created by joining two female parts together using the FSB Stabil spindle

