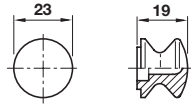
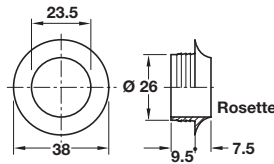


Dimensions in mm



- **H** Push-Lock knob and rosette set
- For 13 mm door thickness
- If a 2 spindle lock is used an additional knob must be ordered
- Plastic



Discontinued ●
Discontinued when stock = 0 +

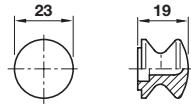
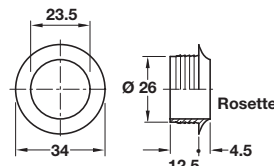
H Push-Lock knob and rosette set for 13 mm door thickness

Finish	Cat. No.
Matt nickel	229.01.604
Polished nickel	● 229.01.700
Polished chrome	● 229.01.200
Polished brass	229.01.800
White	229.00.705

Packing: 10 pcs



- **I** Push-Lock knob and rosette set
- For 16 mm door thickness
- If a 2 spindle lock is used an additional knob must be ordered
- Plastic



I Push-Lock knob and rosette set for 16 mm door thickness

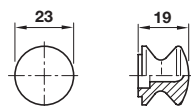
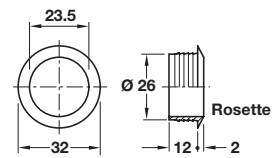
Finish	Cat. No.
Matt nickel	229.01.613
Polished nickel	● 229.01.710
Polished chrome	● <u>229.01.210</u>
Polished brass	229.01.819
White	229.00.714
Brown	● 229.00.116

Packing: 10 pcs

Re-instated



- **J** Push-Lock knob and rosette set
- For 19 mm door thickness
- If a 2 spindle lock is used an additional knob must be ordered
- Plastic



J Push-Lock knob and rosette set for 19 mm door thickness

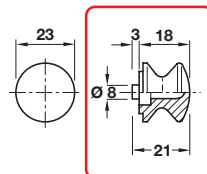
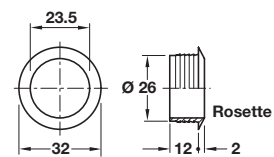
Finish	Cat. No.
Matt nickel	229.01.622
Polished nickel	+ 229.01.720
Polished brass	229.01.828
Brown	● 229.00.125

Packing: 10 pcs

Discontinued when stock=0
 For 229.00.125 use alt. no.
 229.00.198 / 229.02.029



- **L** Push-Lock knob and rosette set
- For 25 mm door thickness
- If a 2 spindle lock is used an additional knob must be ordered
- Plastic



Item L.
 Graphics amended

L Push-Lock knob and rosette set for 25 mm door thickness

Finish	Cat. No.
Matt nickel	229.01.640
Polished brass	● 229.01.840

Packing: 10 pcs