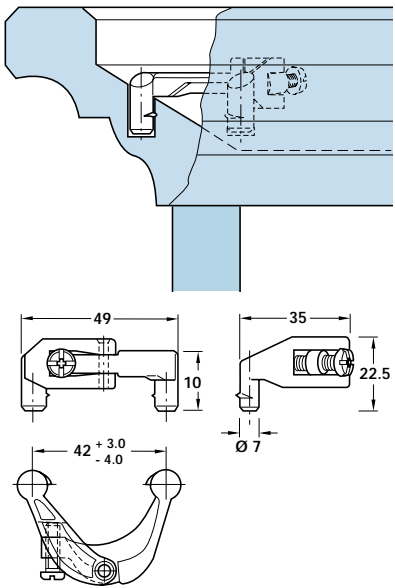


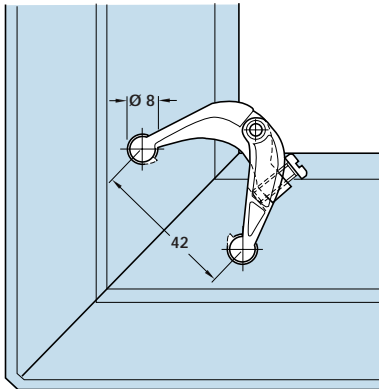
Dimensions in mm



- **A** Mitre joint connector
- For cornice profiles
- The scissor-type jointed fitting has plug ends which are inserted into $\varnothing 8 \text{ mm}$ holes; tightening the screw then draws the mitre joint faces securely together
- Bright zinc alloy



Discontinued ●
Discontinued when stock = 0 +



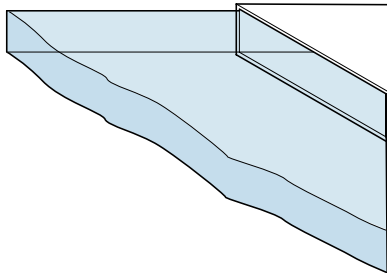
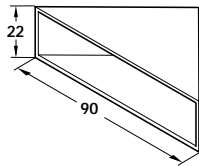
A Mitre joint connector

Cat. No.	262.01.007
Packing: 20 and 100 pcs	

Photograph Added



- **B** Worktop corner protectors
- For protecting corners from damage during transit or in storage
- Black plastic



B Worktop corner protectors

Size	Cat. No.
22 x 90 mm	● 049.00.314

Packing: 1000 pcs