

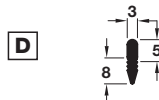
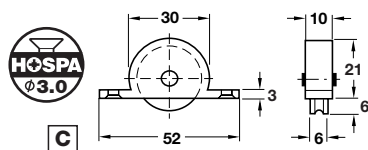
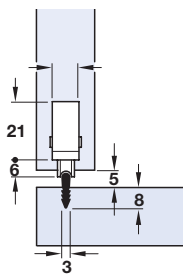
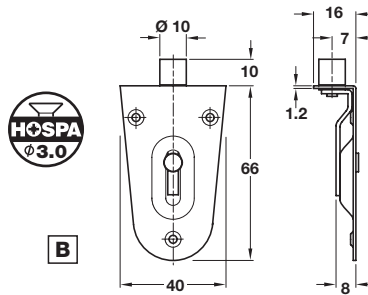
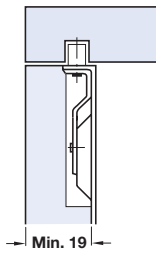
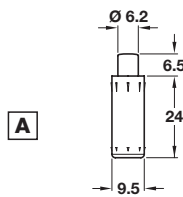
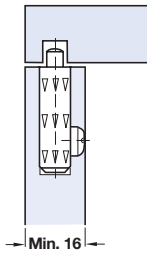
Fittings for Straight Sliding Timber Cabinet Doors

Light Duty Guide Bolts and Bottom Rollers

- **Application:** Light duty low budget domestic cupboards
- **Range:**
 Maximum door weight **10 kg**
 Guide **A:** Minimum door thickness **16 mm**
 Guide **B:** Minimum door thickness **19 mm**
 Roller **C:** Load capacity per pair **20 kg**
- Guide bolt **A** can be used in combination with recess-mounted bottom roller **C** and support track **D** which provide easy low friction movement
- **For ancillary door hardware** i.e. locks, handles and bolts etc. refer to page **19**



Unless otherwise indicated fixing screws are not included and must be ordered separately. The logo shown indicates the type of screw required; fixing screws are shown in Section 11 from page 3.



Light duty guide bolts and bottom roller

Item	Description	Base material and finish	Order qty per door	Cat. No.
A Guide bolt	with spring loaded pin	White nylon	2 pcs	402.90.006
or B Retractable guide bolt	with brass roller	Nickel-plated steel	2 pcs	405.20.910
C Bottom roller, mortice type	plastic-coated ball bearing roller	Brown plastic	2 pcs	404.29.105

Support track

Item	Description	Base material and finish	50 m*
D Support track	press fit, into groove	Brown plastic	401.01.102

*Please note: Track is priced and sold in metres. Please order in multiples of metre quantity shown i.e. **50 metres = 1 length**