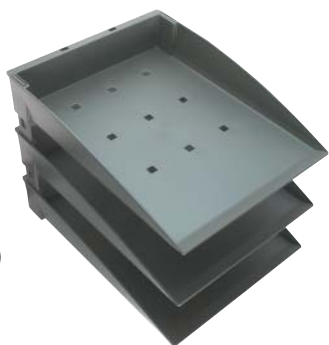


A Tray set with swivel arm, edge clamping

- For desktop thickness 19-55 mm
- Consists of:
 - 3 x A4 trays, landscape
 - 2 x Dividers
 - 1 x Swivel arm set (3 swivel arms, clamps and top cap)
- Plastic

Finish	Cat. No.
Black	818.58.228

Order qty: 1 set



B A4 tray sets (filing unit)

- Consists of:
 - 3 x A4 trays portrait
 - 1 x 3 tray stacking bar kit
- Plastic

Finish	Cat. No.
Anthracite	818.58.344
Black	818.58.246
Silver	818.58.946

Order qty: 1 set



C A4 trays, portrait

- Dimensions 272 x 350 x 62 mm
- Plastic

Finish	Cat. No.
Anthracite	818.56.368
Black	818.56.260
Opaque	818.56.760
Silver	818.56.968

Order qty: 1 pc



D A4 trays, landscape

- Dimensions 395 x 280 x 62 mm
- Plastic

Finish	Cat. No.
Anthracite	818.56.359
Black	818.56.251
Opaque	818.56.750
Silver	818.56.958

Order qty: 1 pc



E A4 stationery trays

- For use independently or with A4 landscape tray
- With pencil pot, pen/pad base and rubber feet
- Dimensions 388 x 166 x 95 mm
- Plastic

Finish	Cat. No.
Anthracite	818.57.301
Black	818.57.203
Opaque	818.57.700
Silver	818.57.900

Order qty: 1 set



F Dividers

- For use with the trays
- Dimensions 240 x 43 x 10 mm
- Plastic

Finish	Cat. No.
Anthracite	818.56.395
Black	818.56.297
Opaque	818.56.790
Silver	818.56.998

Order qty: 1 pc