

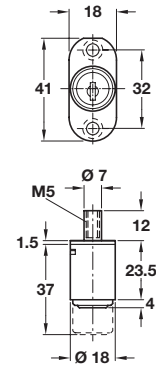
A Central locking push-button cylinder

- Ø 18 mm cylinder
- For installation in lock panel
- **Lock:** by pushing in the cylinder
- **Unlock:** by turning the key
- **6 plate levers** = 3,000 possible key changes
- Matt nickel-plated zinc alloy case and cylinder
- **Accessories:** 2 keys with black plastic key caps and 1 cylinder rosette

Random key changes	
Cat. No.	234.66.600

Order qty: 1 pc

Central locking accessories, bar guides and arresting pins are shown on pages 11-12

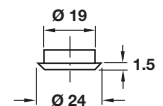


B Central locking push-button cylinder

- Ø 18 mm cylinder
- For installation in lock panel
- **Lock:** by pushing in the cylinder
- **Unlock:** by turning the key
- **5 plate levers** = 200 possible key changes
- Matt nickel-plated or gold coloured zinc alloy case and cylinder
- **Accessories:** 2 keys
- **Cylinder rosette** must be ordered separately

Random key changes		
Finish	Matt nickel-plated	Gold coloured
Cat. No.	234.50.600	234.50.800
Keyed alike	Cat. No.	
Key change FH1	234.50.601	
Key change FH2	234.50.602	
Key change FH3	234.50.603	
Key change FH4	234.50.604	
Key change FH5	234.50.605	

Order qty: 1 pc



C Cylinder rosette

- For use with Ø 18 mm cylinders
- Brass

Finish	Cat. No.
Matt nickel-plated	219.19.676

Order qty: Multiples of 100 pcs