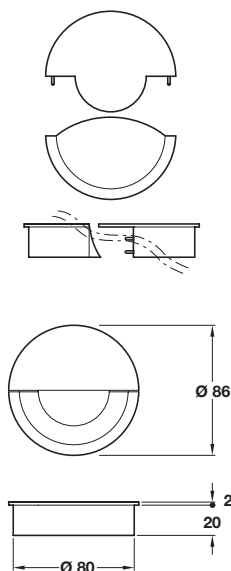


A Cable outlet, Ø 80 mm

- Three part plastic cable outlet, sleeve and cover plate with removable section
- A section of the cover plate is removed and stored under the cover plate to allow cable through
- The cover plate can be removed completely to allow cables with plugs attached through
- Plastic

Finish	Cat. No.
White	429.89.720
Ivory	429.89.471
Beige	429.89.426
Light grey	429.89.524
Chrome	429.89.220
Sepia brown	429.89.122
Lava brown	429.89.024
Black	429.89.328

Order qty: 1 pc

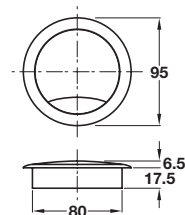


B Cable outlet, Ø 80 mm

- Two part cable outlet for installation in Ø 80 mm holes
- Steel

Finish	Cat. No.
Polished chrome	631.50.200

Order qty: 1 pc

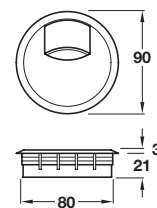


C Cable outlet, Ø 80 mm

- Two part cable outlet for installation in Ø 80 mm holes
- Plastic

Finish	Cat. No.
Silver	631.40.904

Order qty: 1 pc

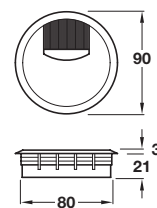


D Cable outlet, sliding system, Ø 80 mm

- Two part cable outlet for installation in Ø 80 mm holes
- With integral sliding cover
- Plastic

Finish	Cat. No.
White aluminium effect	631.35.204
Stainless steel effect	631.35.004
Black	631.35.304

Order qty: 1 pc

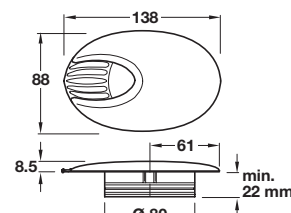


E Cable outlet, brush system, Ø 80 mm

- Two part cable outlet for installation in Ø 80 mm holes
- With flexible brush seal
- Plastic

Finish	Cat. No.
White aluminium effect	631.35.214
Stainless steel effect	631.35.014
Black	631.35.314

Order qty: 1 pc



F Tango cable outlet, Ø 80 mm

- Two part cable outlet for installation in Ø 80 mm holes
- Inner guide plates can be removed
- Zinc alloy cover
- Plastic base

Cover/base	Cat. No.
Matt chrome/black	631.10.430

Order qty: 1 pc