

**A Rim lock case**

- For on-site installation of cylinder core **A**
- Closure travel **180°**, can be clockwise or anti-clockwise
- Backset changes from **20.5** to **30** mm only because of extended bolt length
- Black plastic lock case
- Bright zinc alloy cylinder housing
- Nickel-plated steel bolt



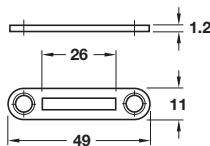
\*Install cylinder core turned through **180°**

Backset: <b>20.5 mm</b>		
Application	Left/Right*	Drawer
Cat. No.	232.12.302	232.12.311

Order qty: 1 pc

Backset: <b>30 mm</b>		
Application	Left/Right	Drawer
Cat. No.	232.12.320	232.12.339

Order qty: 1 pc

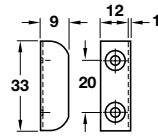


**B Striking plate**

- Steel

Finish	Cat. No.
Black	239.08.705

Order qty: 1 pc



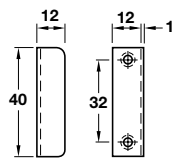
**C Striking plate**

- Screw fixing
- Steel

Finish	Cat. No.
Nickel-plated	239.40.703
Brass-plated	239.40.507

Order qty: Multiples of 10 pcs

Other striking plates are shown in Section 5 page 141

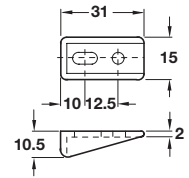


**D Striking plate**

- Screw fixing
- Nickel-plated steel

Finish	Cat. No.
Nickel-plated	239.41.013

Order qty: Multiples of 10 pcs



**E Stop wedge**

- Black plastic

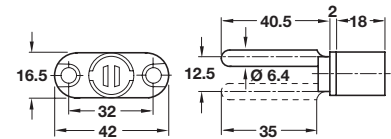
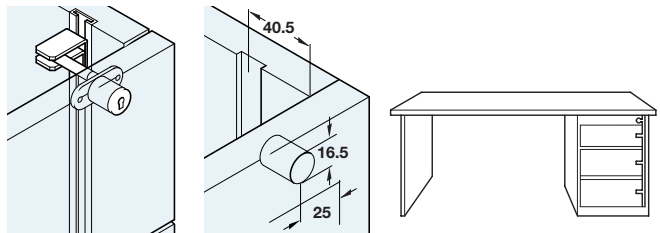


Cat. No.	Stop wedge
	234.91.090

Order qty: Multiples of 10 pcs

**Central locking rotary cylinder lock case and adaptor**

- For use with central locking accessories shown below and on page 7



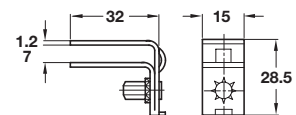
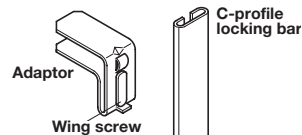
**F Rotary cylinder lock case**

- With lifting pin, 12.5 mm lift
- For on-site installation of cylinder core **A**
- Closure travel **180°**
- Bright zinc alloy



Cat. No.	Lock case
	234.85.001

Order qty: 1 pc



**G Adaptor**

- For use with **F**
- Secure to lock bar **A** using the combination tool **E** shown on page 7
- Galvanized steel

Item references changed from M and O to F, A and E

Cat. No.	Adaptor
	234.87.998

Order qty: 1 pc