

Table Fittings

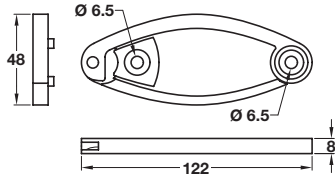
Table Connectors and Corner Braces



Important note: Unless otherwise indicated fixing screws are not included and must be ordered separately.

The symbol shown next to the drawing indicates the type and size of screw required.

Fixing materials can be found in **Section 11** from page 3.



A Table link it connector

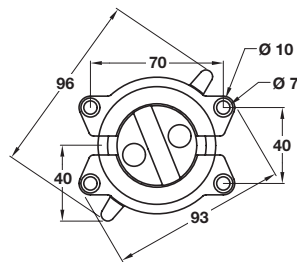
- A foldaway modular connector for desks and table tops with an ingenious design - no need for tools and not visible when tables are separated
- Black plastic

	Cat. No.
Table connector	642.43.310

Order qty: 1 pc

7

Castors, Feet, Legs and Table Fittings

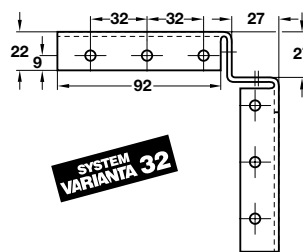
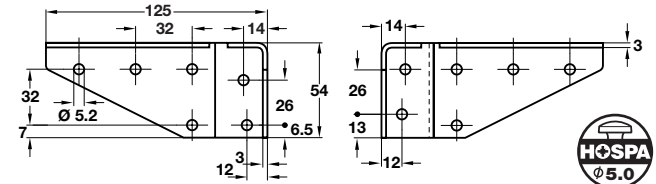


B Bench-type connector

- Universal
- Can be connected to any single plate-top to another without bothering about what is mounted under the table
- Easy to mount
- No loose parts
- Catch positions for assembling interlinking tops and for transport
- 2 pcs = 1 complete set
- Nickel-plated zinc alloy

	Cat. No.
Bench-type connector	642.42.910

Order qty: Multiples of 2 pcs



SYSTEM VARIANTA 32

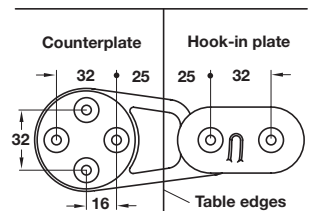


C Corner brace

- For strong corner joints on all types of tables, shelves, cupboards, work benches, portable tables etc.
- Unobstructed leg room under tables without a peripheral frame
- Can be used with wood, metal or plastics
- With extra screw fixing holes on the side
- Nickel-plated steel

	Cat. No.
Corner brace	641.01.711

Order qty: 1 pc



D Table connector

- For screw fixing beneath table top
- Installation height: 9.1 mm
- Load bearing capacity: 50 kg with 4 connectors, depending on material and size of table top and screws used
- Slight tensile strain for firm connection for connecting table tops
- Supplied with 2 hook-in parts and 1 pair of catches
- Grey plastic hook-in plate, bright zinc alloy hook

	Cat. No.
Table top connector for separable tables	642.42.920

Order qty: 1 pair

TCH-FF 2010, HUK. Dimensional data not binding. We reserve the right to alter specifications without notice.