

Extending Table Runners

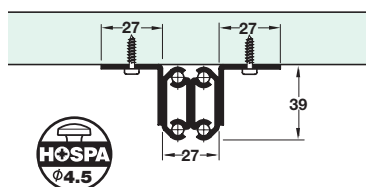
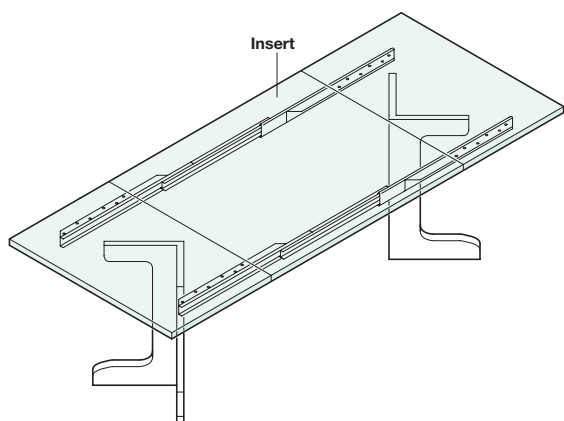
Extending Table Runners for Tables without Frames



Important note: Unless otherwise indicated fixing screws are not included and must be ordered separately.

The symbol shown next to the drawing indicates the type and size of screw required.

Fixing materials can be found in **Section 11** from page 3.



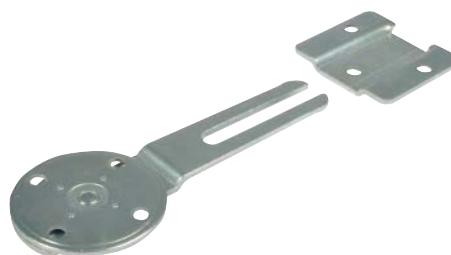
A Extending table runners

- Maximum load carrying capacity **60 kg**
- Screw fixing to underside of the table top
- For use with legs that attach directly to the table top
- Galvanized steel

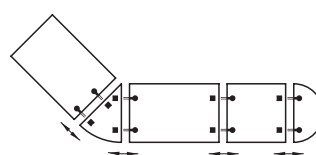
Installed length	740 mm
Overall extended length	1800 mm
Extended length	1060 mm
Cat. No.	642.64.740

Order qty: 1 set

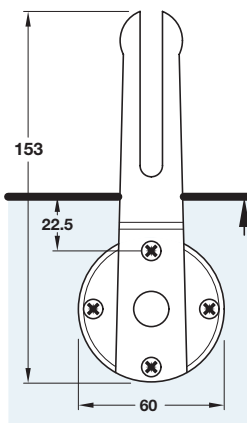
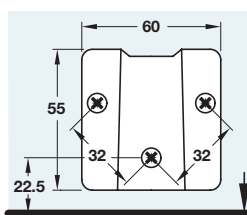
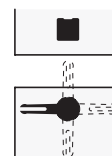
Accessories for extending tables are shown on page 48



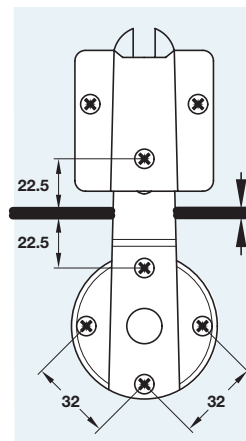
For connecting tables, table tops, chairs, beds, etc.



Pivoted under table when not needed



Unlocked



Locked

B Table connector

- Comprises:
 - 1 x snap-in part
 - 1 x counterplate
- Screw fixing
- Snaps together under light pressure without any tools
- Just pull to separate
- Snap-in part can be pivoted by 360°, lock position every 90°
- Pivot under table when not needed
- Steel

Finish	Cat. No.
Galvanized	642.42.900

Order qty: 1 pc

TCH-FF 2010, HUK. Dimensional data not binding. We reserve the right to alter specifications without notice.