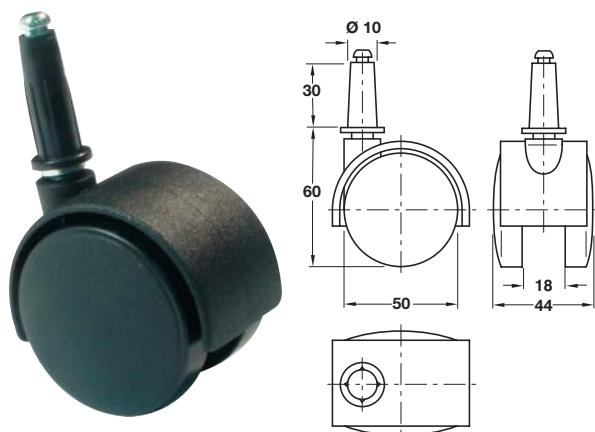


Castors Twin Wheel Castors, Ø 50 mm Wheel

All suitable for use on soft floor coverings such as carpets



A Twin wheel castor, press fit, hooded

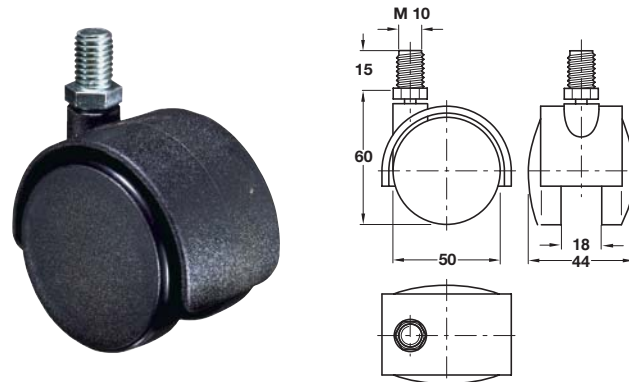
- Ø 50 mm
- With plastic press fit Ø 10 x 30 mm socket with no holes for fixing pins
- Maximum load carrying capacity **40 kg** per castor
- Matt black plastic

Item A.
Catalogue shows
25 mm Correct
dimension is
30 mm

	Without brake	With brake
Cat. No.	660.07.320	660.08.320

Order qty: 1 pc

Photograph and illustration show castors without brake

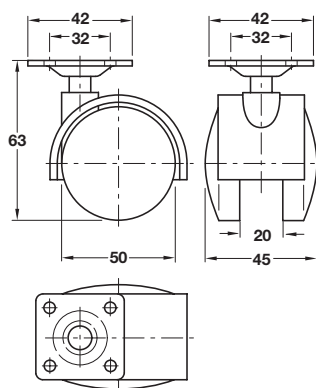


C Twin wheel castor, M10 thread fixing

- Ø 50 mm
- With M10 x 15 mm threaded bolt
- Maximum load carrying capacity **40 kg** per castor
- Matt black plastic

	Without brake	With brake
Cat. No.	660.07.324	660.08.324

Order qty: 1 pc



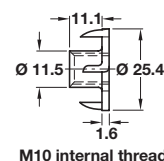
B Twin wheel castor, plate fixing, hooded

- Ø 50 mm
- With 42 x 42 mm mounting plate
- Maximum load carrying capacity **40 kg** per castor
- Matt black plastic



	Without brake	With brake
Cat. No.	660.07.321	660.08.321

Order qty: 1 pc

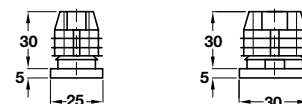


D M10 T-nut, knock-in

- With four prongs
- For use in mounting M10 thread fixing castors under wooden bases
- Dull steel

	Cat. No.
M10 T-nut	031.00.301

Order qty: Multiples of 100 pcs



E Square plug with M10 internal thread

- For use with castors with M10 threaded bolts
- For knock-in installation in 25 x 25 mm and 30 x 30 mm square tubes, 1.5-2 mm gauge steel
- Black plastic

Size	Cat. No.
25 x 25 mm	652.11.627
30 x 30 mm	652.11.636

Order qty: 1 pc

19.07.10/1*

TCH-FF 2010, HUK. Dimensional data not binding. We reserve the right to alter specifications without notice.