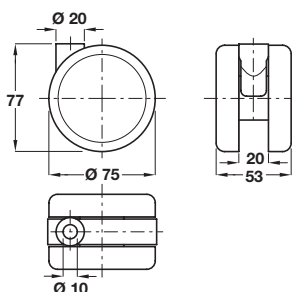


A Twin wheel castor

- Maximum load carrying capacity **50 kg** per castor
- Housing: Aluminium coloured plastic
- Wheel: Dark grey rubber
- Brake: Black plastic
- **Order Ø 10 mm pin separately**

	Without brake	With brake
Cat. No.	660.91.914	660.90.914

Order qty: 1 pc

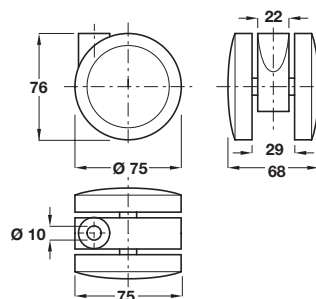


B Twin wheel castor

- Maximum load carrying capacity **60 kg** per castor
- Housing: Aluminium coloured plastic
- Wheel: Dark grey rubber
- Brake: Black plastic
- **Order Ø 10 mm pin separately**

	Without brake	With brake
Cat. No.	660.91.925	660.90.925

Order qty: 1 pc

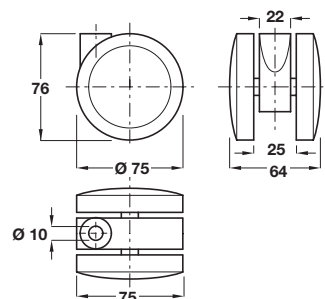


C Twin wheel castor

- Maximum load carrying capacity **80 kg** per castor
- Housing: Silver coloured RAL 9006 plastic
- Wheel: Mid grey rubber
- Brake: Black plastic
- **Order Ø 10 mm pin separately**

	Without brake	With brake
Cat. No.	660.91.235	660.90.235

Order qty: 1 pc



D Twin wheel castor

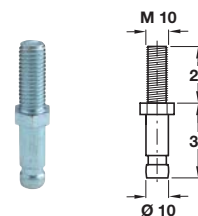
- Maximum load carrying capacity **80 kg** per castor
- Housing: Silver coloured RAL 9006 plastic
- Wheel: Mid grey rubber
- Brake: Black plastic
- **Order Ø 10 mm pin separately**

	Without brake	With brake
Cat. No.	661.21.230	661.21.240

Order qty: 1 pc

E Pin, Ø 10 mm, with M10 thread

- M10 x 25 mm
- Steel

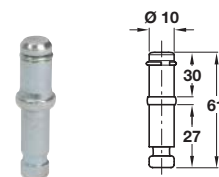


Finish	Cat. No.
Galvanized	660.92.920

Order qty: 1 pc

F Pin, Ø 10 mm, with circlip

- Must be used with item G
- Steel

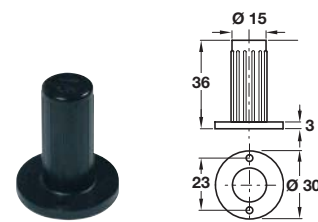


Finish	Cat. No.
Galvanized	660.92.930

Order qty: 1 pc

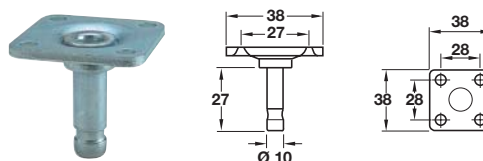
G Socket

- Must be used with item F
- Plastic



Finish	Cat. No.
Black	660.92.390

Order qty: 1 pc



H Pin, Ø 10 mm, with mounting plate

- Steel

Finish	Cat. No.
Galvanized	660.92.950

Order qty: 1 pc