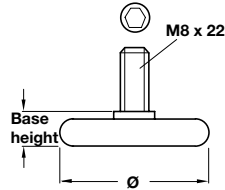


A Furniture alignment wedge

- Ribs can be broken off from 1 mm to 8 mm
- Brown plastic

	Cat. No.
Wedge	006.90.900

Order qty: Multiples of 100 pcs

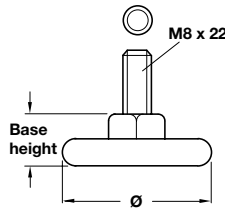


B Base leveller

- With M8 x 22 mm threaded bolt
- Black plastic

Ø	Base height	Cat. No.
30 mm	9 mm	651.09.302
40 mm	10 mm	651.09.304

Order qty: 1 pc

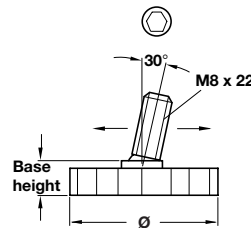


C Base leveller

- With hexagonal nut
- With M8 x 22 mm threaded bolt
- Black plastic

Ø	Base height	Cat. No.
30 mm	14 mm	651.09.322

Order qty: 1 pc

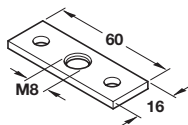
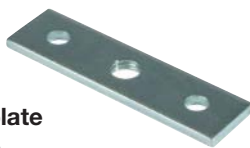


D Base leveller

- Can be used with saddle F or G
- With M8 x 22 mm threaded bolt
- Black plastic

Ø	Base height	Cat. No.
25 mm	10 mm	651.08.301
30 mm	10 mm	651.08.302
40 mm	12 mm	651.08.304
50 mm	12 mm	651.08.305

Order qty: 1 pc

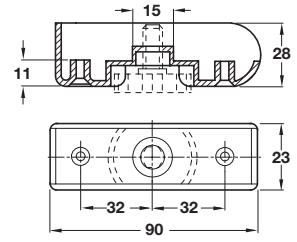


E Screw on plate

- Galvanized steel

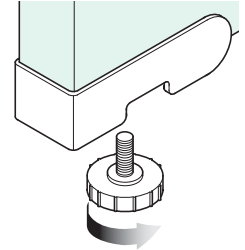
	Cat. No.
Screw on plate	651.14.900

Order qty: 1 pc



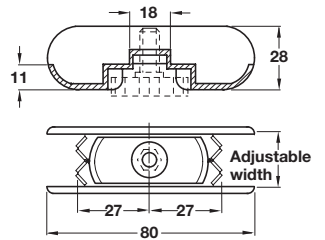
F Corner panel adjuster

- For use with base leveller D Ø 30 mm
- For panel thickness 25 mm
- Black plastic



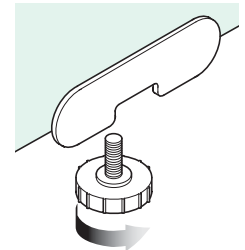
	Cat. No.
Corner panel adjuster	651.11.301

Order qty: 1 pc



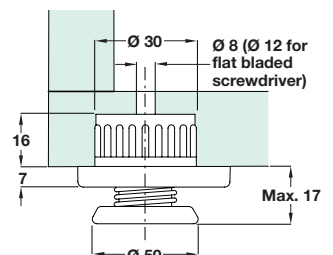
G Centre panel adjuster

- For use with base leveller D Ø 30 mm
- For panel thickness from 25 to 30 mm
- Black plastic



	Cat. No.
Centre panel adjuster	651.11.310

Order qty: 1 pc



H Leveller adjuster

- Load cargo capacity 175 kg
- Zinc alloy/black plastic

	Cat. No.
Leveller adjuster	651.16.300

Order qty: 1 pc