

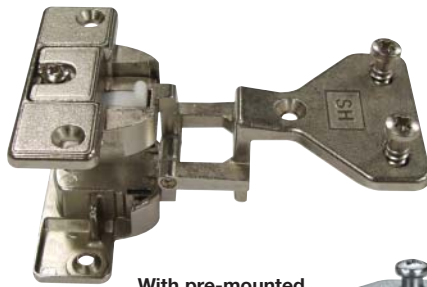
Hinges with Exposed Axles

Regula Hinges with 6 mm Exposed Axle

- Regula hinges
- For door thickness 16 to 20 mm
- With lateral adjustment up to 3 mm
- With vertical adjustment ± 2 mm
- Sprung
- Nickel plated zinc alloy
- Opening angle 180°



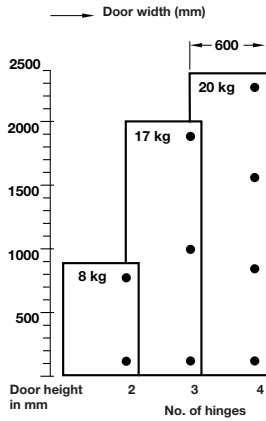
With Hospa $\varnothing 3.5$ mm raised head screws or press-fit version



With pre-mounted Varianta $\varnothing 5$ mm screws



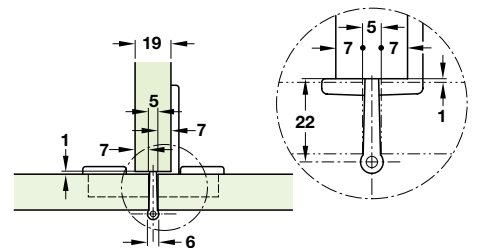
180°



The hinge requirement is determined by the weight and the shape of the door

The table above gives you a guideline for 19 mm chipboard

Doors must not be wider than they are high



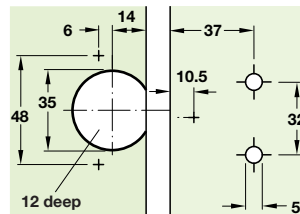
A Regula twin hinge with exposed axle

- Twin door mounting
- Door fixing: Hospa $\varnothing 3.5$ mm raised head countersunk screws
- Side panel fixing: Pre-mounted Varianta $\varnothing 5$ mm screws
- 7 mm door overlay

	Cat. No.
Twin door mounting	344.21.013

Order qty: 1 pc

Drilling pattern for Varianta screws

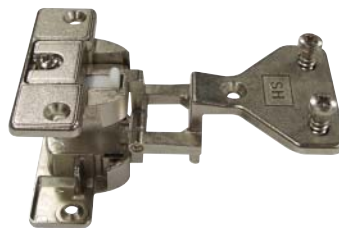


B Regula twin hinge and screw boss

- Two separate parts make item 344.21.013 - Regula twin hinge with exposed axle

Item	Cat. No.
Hinge arm twin	344.21.913
Screw boss	344.21.801

Order qty: 1 pc



Mounting screws

Hospa chipboard screws raised head $\varnothing 3.5$ mm with cross slots



Finish: Nickel-plated steel

Length	Cat. No.
15 mm	015.55.639
17 mm	015.55.648
20 mm	015.55.657

Order qty: Multiples 1000 pcs

TCH-FF 2010, HUK. Dimensional data not binding. We reserve the right to alter specifications without notice.