

Hinges with Exposed Axles

Regula Hinges with 6 mm Exposed Angle

• Regula hinges

- For door thickness 16 to 20 mm
- With lateral adjustment up to 3 mm
- With vertical adjustment ± 2 mm
- With spring
- Nickel plated zinc alloy
- Opening angle **240°**



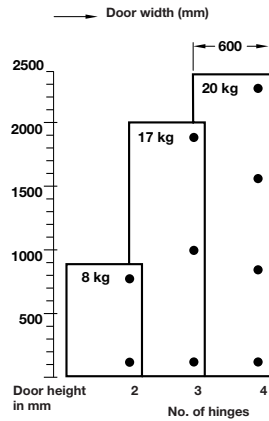
With Hospa $\varnothing 3.5$ mm raised head screws or press-fit version



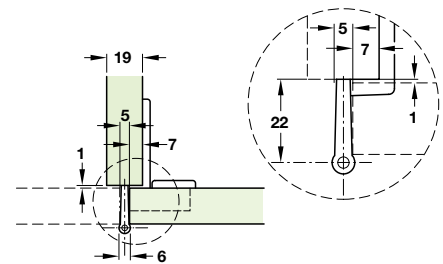
With Hospa $\varnothing 3.5$ mm pan head screws



With pre-mounted Varianta $\varnothing 5$ mm screws



The hinge requirement is determined by the weight and the shape of the door
 The table above gives you a guideline for 19 mm chipboard
 Doors must not be wider than they are high



6

Hinges

A Regula centre hinge with exposed axle

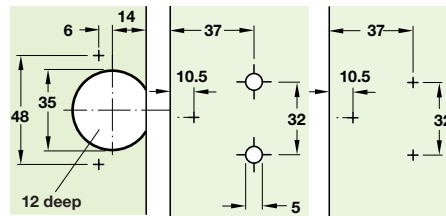
- Centre panel mounting
- Door fixing: Hospa $\varnothing 3.5$ mm raised head countersunk screws
- Side panel fixing: Pre-mounted Varianta $\varnothing 5$ mm screws or Hospa $\varnothing 3.5$ mm pan head screws
- 7 mm door overlay

Centre panel fixing	Cat. No.
Pre-mounted Varianta screws	344.21.011
Hospa screws	344.21.001

Order qty: 1 pc

Drilling pattern for Varianta screws

Drilling pattern for Hospa screws



Mounting screws

- Hospa chipboard screws, raised head, $\varnothing 3.5$ mm with cross slots
- Nickel-plated steel



Length	Cat. No.	Order qty
15 mm	015.55.639	1000
17 mm	015.55.648	1000
20 mm	015.55.657	1000

Mounting screws

- Hospa chipboard screws, pan head, $\varnothing 3.5$ mm with cross slots
- Nickel-plated steel



Length	Cat. No.	Order qty
15 mm	015.71.633	1000
17 mm	015.71.642	1000
20 mm	015.71.651	1000