

# Hinges with Exposed Axles

## Regula Hinges with 6 mm Exposed Axle

### • Regula hinges

- For door thickness 16 to 20 mm
- With lateral adjustment up to 3 mm
- With vertical adjustment  $\pm 2$  mm
- Sprung
- Nickel-plated zinc alloy
- Opening angle 270°



With Hospa  $\varnothing 3.5$  mm raised head screws or press-fit version



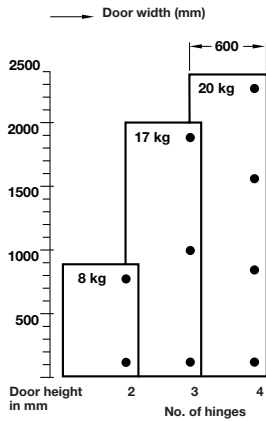
With Hospa  $\varnothing 3.5$  mm pan head screws



With pre-mounted Varianta  $\varnothing 5$  mm screws



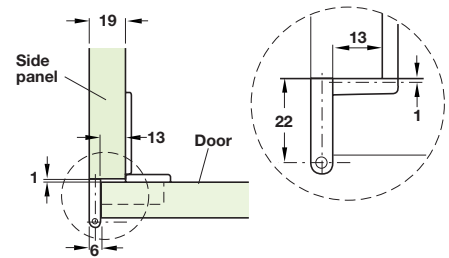
270°



The hinge requirement is determined by the weight and the shape of the door

The table above gives you a guideline for 19 mm chipboard

Doors must not be wider than they are high



### A Regula corner hinge with exposed axle

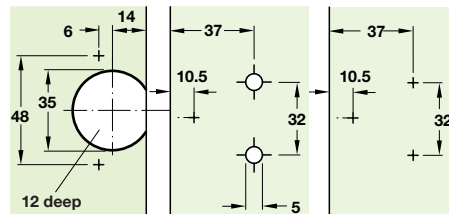
- Side panel mounting
- Door fixing: Hospa  $\varnothing 3.5$  mm raised head countersunk screws
- Side panel fixing: Pre-mounted Varianta  $\varnothing 5$  mm screws or Hospa  $\varnothing 3.5$  mm pan head screws
- 13 mm door overlay

Side panel fixing	Cat. No.
Pre-mounted Varianta screws	344.21.010
Hospa screws	344.21.000

Order qty: 1 pc

Drilling pattern for Varianta screws

Drilling pattern for Hospa screws

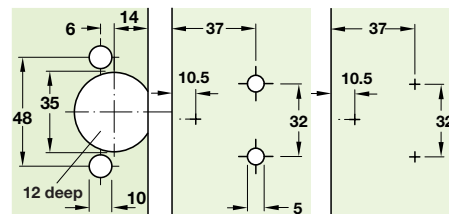


### B Regula corner hinge with exposed axle

- Side panel mounting
- Door fixing: Press fit
- Side panel fixing: Pre-mounted Varianta  $\varnothing 5$  mm screws or Hospa  $\varnothing 3.5$  mm pan head screws
- 13 mm door overlay

Side panel fixing	Cat. No.
Pre-mounted Varianta screws	344.21.110
Hospa screws	344.21.100

Order qty: 1 pc



#### Mounting screws

Hospa chipboard screws raised head  $\varnothing 3.5$  mm with cross slots



Finish: Nickel-plated steel

Length	Cat. No.
15 mm	015.55.639
17 mm	015.55.648
20 mm	015.55.657

Order qty: Multiples of 1000 pcs

#### Mounting screws

Hospa chipboard screws Pan head  $\varnothing 3.5$  mm with cross slots



Finish: Zinc-plated steel

Length	Cat. No.
15 mm	015.71.633
17 mm	015.71.642
20 mm	015.71.651

Order qty: 1000 pcs