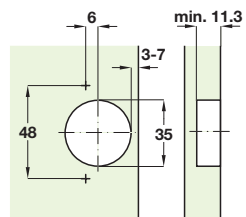


A Concealed hinges

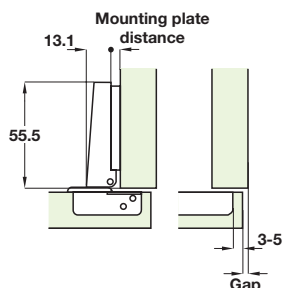
- Opening angle 110°
- Automatic closing spring
- Screw fixing
- Slide on arms
- Nickel-plated steel

Drilling dimensions for cup fixing



Drilling pattern 48/6

Full overlay mounting



Door overlay mm

12	13	14	15	16	17	18	19	20	
				3	4	5	6	7	0
		3	4	5	6	7			2
3	4	5	6	7					4
Distance to cup mm					Mounting plate distance mm				

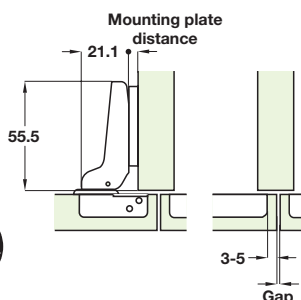
Straight hinge arm

Cat. No.

Nickel plated 311.90.500

Order qty: Multiples of 50 pcs

Half overlay/twin mounting



Door overlay mm

4	5	6	7	8	9	10	11	12	
				3	4	5	6	7	0
		3	4	5	6	7			2
3	4	5	6	7					4
Distance to cup mm					Mounting plate distance mm				

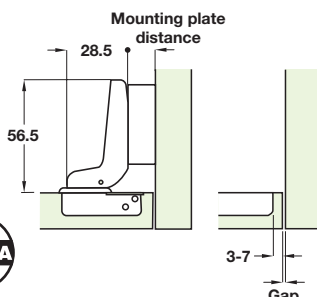
Cranked hinge arm, 8 mm crank

Cat. No.

Nickel-plated 311.90.501

Order qty: Multiples of 50 pcs

Inset mounting



Door overlay mm

3	2	1	0	-1	-2	-3	-4	-5	
				3	4	5	6	7	0
		3	4	5	6	7			2
3	4	5	6	7					4
Distance to cup mm					Mounting plate distance mm				

Cranked arm, 17 mm crank

Cat. No.

Nickel-plated 311.90.502

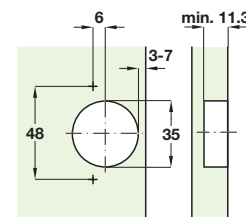
Order qty: Multiples of 50 pcs

D Concealed hinge



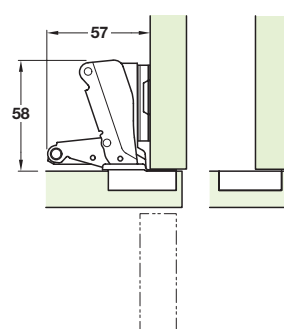
- Opening angle 170°
- Sprung
- Screw fixing
- Slide on arms
- Nickel-plated steel

Drilling dimensions for cup fixing



Drilling pattern 48/6

Full overlay



0 mm crank

Cat. No.

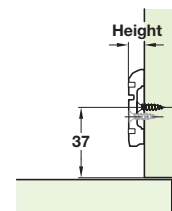
Nickel-plated 311.93.500

Order qty: Multiples of 50 pcs



E Cruciform mounting plate

- For slide on systems on this page only
- Hospa screw fixing
- Height adjustment ± 2 mm
- Nickel-plated steel



Height

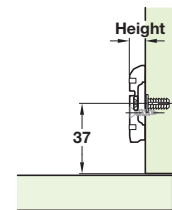
0 mm	Cat. No.
2 mm	311.98.500
4 mm	311.98.502
	311.98.504

Order qty: Multiples of 50 pcs



F Cruciform mounting plate

- For slide on systems on this page only
- With pre-mounted Euro screws
- Height adjustment ± 2 mm
- Nickel-plated steel



Height

0 mm	Cat. No.
2 mm	311.98.510
4 mm	311.98.512
	311.98.514

Order qty: Multiples of 50 pcs