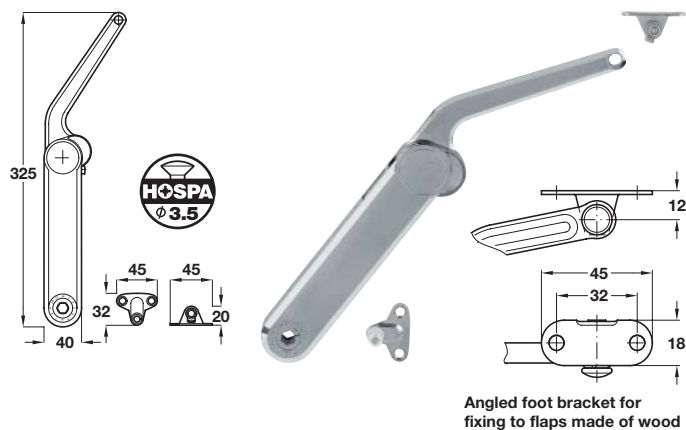


# Flap Fittings

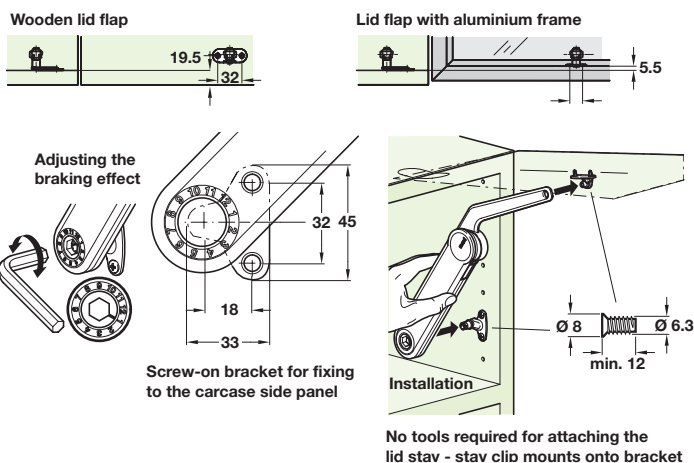
## Maxi 3675 Lid Stays with Power Assisted Opening

### A Maxi 3675 lid stay

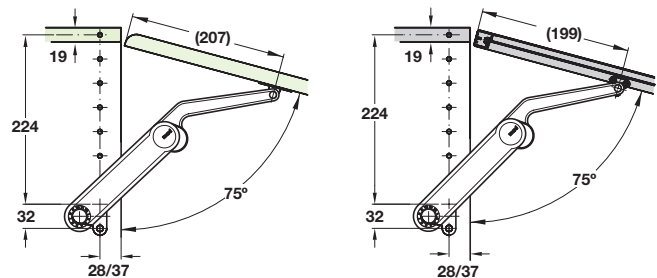
- Opening angles: **75°, 90° or 110°**
- With power assisted opening
- Unhanded design
- Clip-mounting on pre-mounted screw fixing brackets, no tools required
- Installation instructions included
- Height  $\pm 2$  mm, side  $+3/-1$  mm, tilt  $\pm 1.5$  mm and holding power adjustment with SW10 Allen key facility
- Nickel-plated zinc alloy lid stay, nickel-plated steel screw-fixing brackets, beige plastic hinge cover and adjusting screw



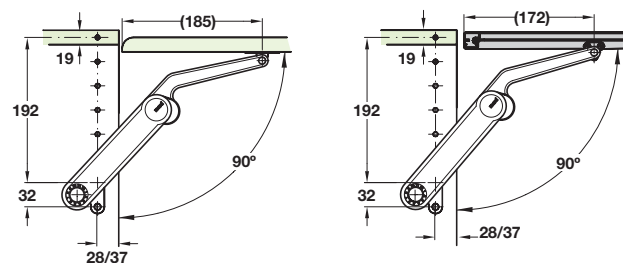
Model	Distance from edge	Cat. No.
<b>Wooden flaps and flaps with aluminium frame, from frame width 45 mm</b>		
A	28 mm	373.69.511
A	37 mm	373.69.512
B	28 mm	373.69.411
B	37 mm	373.69.412
C	28 mm	373.69.711
C	37 mm	373.69.712
D	28 mm	373.69.311
D	37 mm	373.69.312
<b>Flaps with aluminium frame, frame width 20 mm</b>		
A	28 mm	373.69.501
A	37 mm	373.69.502
B	28 mm	373.69.401
B	37 mm	373.69.402
C	28 mm	373.69.701
C	37 mm	373.69.702
D	28 mm	373.69.301
D	37 mm	373.69.302



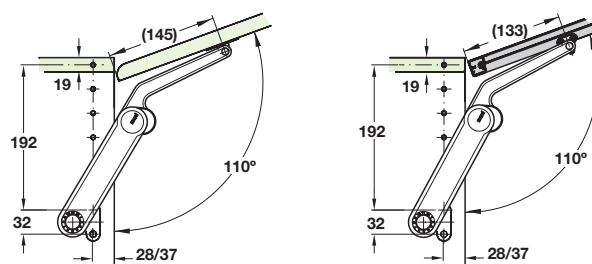
For flaps with 75° opening angle



For flaps with 90° opening angle



For flaps with 110° opening angle



Order qty: 1 pc

Model	A	B	C	D
Flap height mm	Flap weight (Kg)			
<b>With opening angle 75°</b>				
300	3.8 - 7.1	6.7 - 13.7	11.9 - 21.0	15.4 - 27.3
400	2.8 - 5.3	5.0 - 10.3	8.9 - 15.8	11.6 - 20.5
500	2.3 - 4.3	4.1 - 8.3	7.2 - 12.5	9.4 - 16.2
600	1.9 - 3.5	3.3 - 7.0	5.9 - 10.6	7.6 - 13.7
700	1.6 - 3.0	2.8 - 5.7	5.0 - 8.8	6.5 - 11.4
800	1.4 - 2.7	2.5 - 5.1	4.4 - 7.9	5.7 - 10.4
900	1.3 - 2.4	2.2 - 4.6	4.0 - 7.0	5.2 - 9.1
1000	1.1 - 2.1	2.0 - 4.1	3.6 - 6.3	4.6 - 8.2
<b>With opening angle 90°</b>				
300	3.0 - 5.3	5.1 - 10.2	9.1 - 15.8	11.9 - 20.8
400	2.3 - 4.0	3.8 - 7.6	6.9 - 11.9	8.9 - 15.6
500	1.8 - 3.2	3.1 - 6.1	5.5 - 9.6	7.2 - 12.5
600	1.5 - 2.7	2.6 - 5.1	4.6 - 7.9	6.0 - 10.4
700	1.3 - 2.2	2.1 - 4.2	3.8 - 6.6	4.9 - 8.7
800	1.1 - 2.0	1.9 - 3.9	3.4 - 5.9	4.4 - 7.8
900	1.0 - 1.8	1.7 - 3.4	3.0 - 5.2	3.9 - 6.9
1000	0.9 - 1.6	1.5 - 3.0	2.7 - 4.7	3.6 - 6.2
<b>With opening angle 110°</b>				
300	2.4 - 4.0	3.9 - 7.5	6.8 - 11.6	9.2 - 15.0
400	1.8 - 3.0	2.9 - 5.6	5.1 - 8.7	6.9 - 11.2
500	1.4 - 2.4	2.4 - 4.5	4.0 - 7.1	5.7 - 9.0
600	1.2 - 2.0	1.9 - 3.8	3.3 - 5.9	4.5 - 7.6
700	1.0 - 1.7	1.7 - 3.1	2.9 - 4.8	3.8 - 6.2
800	0.9 - 1.4	1.4 - 2.8	2.6 - 4.3	3.4 - 5.6
900	0.8 - 1.3	1.3 - 2.5	2.3 - 3.8	3.0 - 5.0
1000	0.7 - 1.2	1.1 - 2.2	2.0 - 3.5	2.7 - 4.5