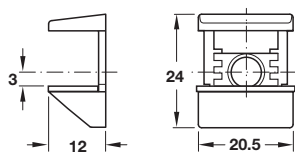


Shelf Supports

Screw Fixing and Plug In Shelf Supports

***Important note:** More than 2 pcs may be required per shelf depending on shelf weight and dimensions



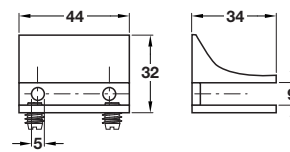
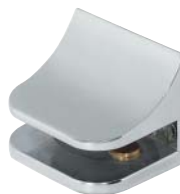
A Shelf clamp support

- For 6, 8 and 10* mm glass thicknesses (*For 10 mm glass the top rubber part needs to be removed)
- Screw fixing
- Lifting and clamping device prevents glass shelf from tipping, lifting or coming out
- Zinc alloy with plastic insert for glass

Finish	Cat. No.
Nickel-plated	282.13.600

Order qty: 1 pc*

***Important note:** More than 2 pcs may be required per shelf depending on shelf weight and dimensions



C Shelf clamp support, screw fixing

- For 6-8 mm shelf thickness
- Zinc alloy

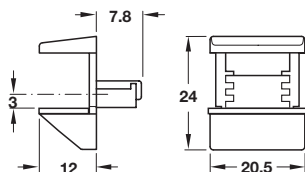
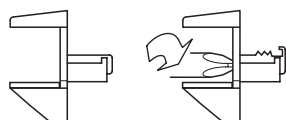
Finish	Cat. No.
Stainless steel	284.01.073
RAL 9006 silver coloured	284.01.973
Polished chrome-plated	284.01.273

Order qty: Multiples of 2 pcs*

5

Shelf Supports and Brackets

***Important note:** More than 2 pcs may be required per shelf depending on shelf weight and dimensions



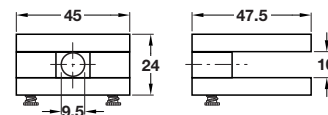
B Shelf clamp support, plug in

- For Ø 5 mm hole
- For 6, 8 and 10* mm glass thickness (*For 10 mm glass the top rubber part needs to be removed)
- Simple plug in and quick grip by turning 180° to avoid surface damage to drill hole
- Lifting and clamping device prevents glass shelf from tipping, lifting or coming out
- Zinc alloy with plastic insert for glass

Finish	Cat. No.
Nickel-plated	282.13.610

Order qty: 1 pc*

***Important note:** More than 2 pcs may be required per shelf depending on shelf weight and dimensions



D Shelf clamp support, screw fixing

- For 8 mm shelf thickness
- Zinc alloy

Finish	Cat. No.
Stainless steel	284.01.081
RAL 9006 silver coloured	284.01.981
Polished chrome-plated	284.01.281

Order qty: 1 pc*