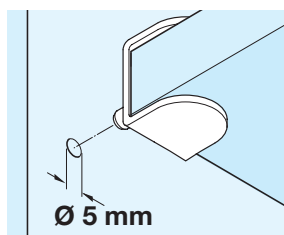


# Shelf Supports

## Plug In Shelf Supports and Shelf Clamp Supports

\* **Load carrying capacity** applies to 4 shelf supports bearing an evenly distributed load. Testing was carried out according to DIN EN 1727 "Mechanical safety requirements to shelf supports"

**Note:** Shelf supports **A, B and C** must be mounted with the locking screw on the top. If the locking screw is on the bottom the weight of the shelf could cause it to loosen

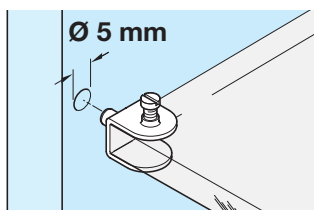


### A Shelf support, plug in

- With black plastic locking screw
- For **Ø 5 mm** hole
- Load capacity **80 kg\***
- For **wooden** shelves **20 mm** thick
- Steel

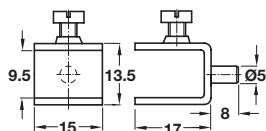
Finish	Cat. No.
Nickel-plated	282.20.751

Order qty: Multiples of 20 pcs



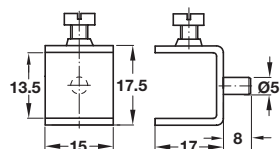
### B Glass shelf support, plug in

- With black plastic locking screw
- For **Ø 5 mm** hole
- For **9 mm glass** thickness
- Steel



Finish	Cat. No.
Nickel-plated	282.20.715

Order qty: Multiples of 20 pcs

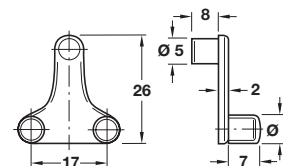


### C Glass shelf support, plug in

- With black plastic locking screw
- For **Ø 5 mm** hole
- For **13 mm glass** thickness
- Steel

Finish	Cat. No.
Nickel-plated	282.20.724

Order qty: Multiples of 20 pcs

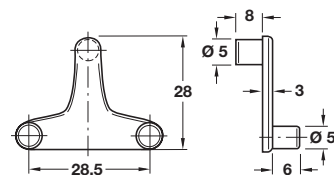
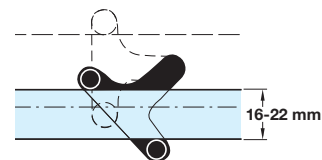


### D Glass shelf clamp supports

- Prevent glass shelves from sliding or falling when being cleaned or loaded
- The clamping effect increases in direct proportion to the loading
- Suitable for furniture manufacture, shopfitting and exhibition stand applications
- Plugs into a **Ø 5 mm** hole, after which the glass shelf is slid into place
- For **glass** shelves **6-10 mm** thick
- Zinc alloy shelf clamp support with two transparent plastic-coated clamping lugs

Finish	Cat. No.
Nickel-plated	282.23.716

Order qty: Multiples of 10 pcs



### E Shelf clamp support

- Prevent wooden shelves from sliding or falling when being cleaned or loaded
- The clamping effect increases in direct proportion to the loading
- Suitable for furniture manufacture, shopfitting and exhibition stand applications
- Plugs into a **Ø 5 mm** hole, after which the wooden shelf is slid into place
- For **wooden** shelves **16-22 mm** thick
- Load carrying capacity **80 kg\***
- Zinc alloy shelf clamp support with two clamping lugs

Finish	Cat. No.
Nickel-plated	282.23.725

Order qty: Multiples of 10 pcs

TCH-FF 2010, HUK. Dimensional data not binding. We reserve the right to alter specifications without notice.