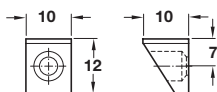
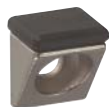


# Shelf Supports

## Screw Fixing Shelf Supports and for Lightweight Panels

# HÄFELE

**\*Load carrying capacity** applies to 4 shelf supports bearing an evenly distributed load. Testing was carried out according to DIN EN 1727 "Mechanical safety requirements for shelf supports"



### A Shelf support, screw fixing

- With cap
- Also suitable for **glass shelves**
- Load carrying capacity **60 kg\***
- Zinc alloy

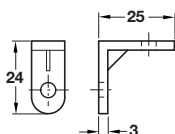


Finish	Cat. No.
Nickel-plated	282.18.706

Order qty: Multiples of 50 pcs

5

Shelf Supports and Brackets



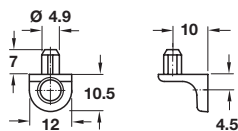
### B Shelf support

- Plastic



Finish	Cat. No.
White	282.21.710

Order qty: Multiples of 100 pcs

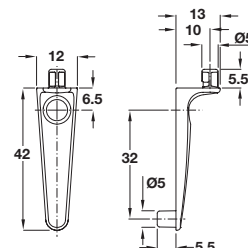
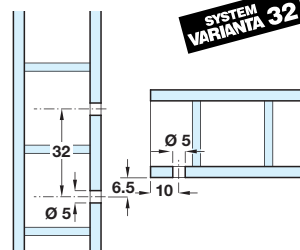


### C Shelf supports, screw fixing

- With shelf fixing lug
- Screw fixing in **Ø 3 mm** or **Ø 5 mm** series-drilled holes, or Hospa screw fixing
- Load capacity **80 kg\***
- Zinc alloy

Finish	Cat. No.
Nickel-plated	282.24.704

Order qty: Multiples of 100 pcs

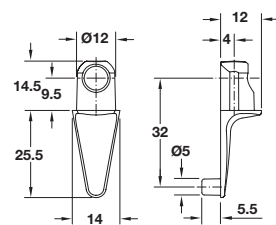
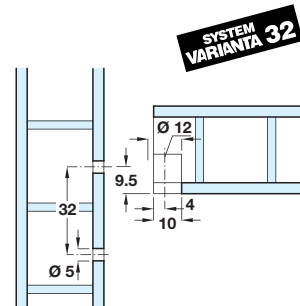


### D HC Shelf support with visible screws

- For shelves made from lightweight panels with or without frame, or from solid wood
- For plug fitting and varianta screw fixing in 32 mm series drilled holes
- Zinc alloy

Finish	Cat. No.
Nickel-plated	282.54.701

Order qty: Multiples of 100 pcs



### E HC Shelf supports with concealed screws

- For shelves made from lightweight panels with or without frame, or from solid wood
- For plug fitting and varianta screw fixing in 32 mm series drilled holes
- Zinc alloy

Finish	Cat. No.
Nickel-plated	282.54.761

Order qty: Multiples of 100 pcs

TCH-FF 2010, HUK. Dimensional data not binding. We reserve the right to alter specifications without notice.