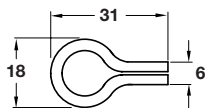


Shelf Supports

Shelf Supports with Sleeves

*Load carrying capacity applies to 4 shelf supports bearing an evenly distributed load. Testing was carried out according to DIN EN 1727 "Mechanical safety requirements for shelf supports"

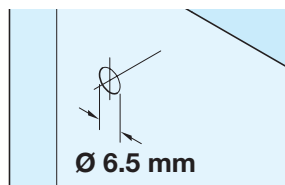


A Loop shelf support, plug-in

- For press fitting into socket B
- Steel

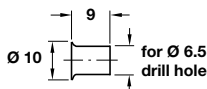
Finish	Cat. No.
Florentine bronzed	282.44.100
Electro brassed	282.44.800
Nickel-plated	282.44.600

Order qty: Multiples of 100 pcs



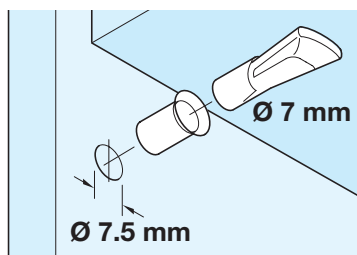
B Socket

- For use with shelf support A
- For Ø 6.5 mm hole
- Steel



Finish	Cat. No.
Florentine bronzed	282.66.100
Electro brassed	282.66.800
Nickel-plated	282.66.600

Order qty: Multiples of 100 pcs

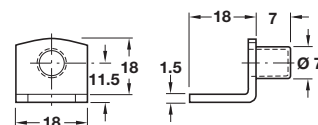
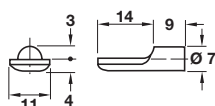


C Shelf support, plug in

- Spoon shaped
- For Ø 7 mm hole or press fitting into sleeve E
- Load carrying capacity 100 kg*
- Steel

Finish	Cat. No.
Brass-plated	282.01.505
Nickel-plated	282.01.701

Order qty: Multiples of 100 pcs

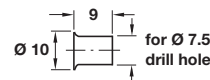


D Shelf support, plug in

- Angle form for Ø 7 mm hole or press-fitting into sleeve E
- Load carrying capacity 80 kg*
- Steel

Finish	Cat. No.
Nickel-plated	282.10.700

Order qty: Multiples of 100 pcs

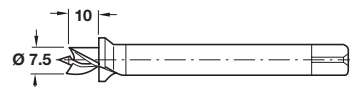


E Sleeve

- For use with shelf support C or D
- For Ø 7.5 mm hole
- Steel

Finish	Cat. No.
Brass-plated	282.50.508
Nickel-plated	282.50.704

Order qty: Multiples of 100 pcs

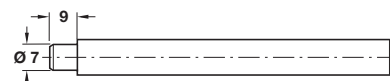
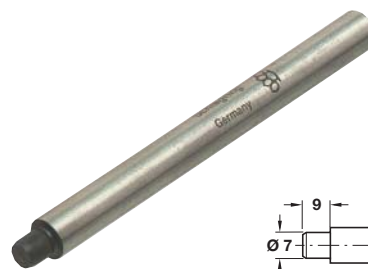


F Drill bit

- For Ø 7.5 mm sleeve

	Cat. No.
Drill bit	006.36.716

Order qty: 1 pc



G Punch tool

- For Ø 7.5 mm sleeve

	Cat. No.
Punch tool	006.36.752

Order qty: 1 pc