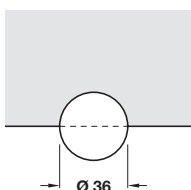


A Mirror corner clip

- For mirrors **4-5 mm** thick
- For attaching mirrors to wood or walls
- Nylon

Finish	Ø 36 mm
White	291.07.700

Order qty: 1 pc



B Mirror edge clip

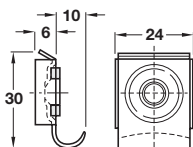
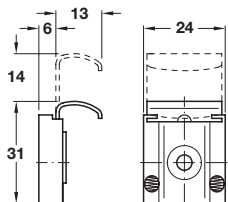
- For mirrors **4-5 mm** thick
- For attaching mirrors to wood or walls
- Nylon

Nylon		
Finish	Ø 36 mm	
White	291.07.710	
Grey	291.07.510	

Order qty: 1 pc

Black nylon with steel cover cap		
Finish	Ø 36 mm	Ø 60 mm
Polished stainless steel	291.07.001	291.07.021

Order qty: 1 pc

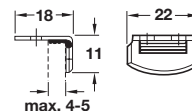


C Mirror clip set

- For frameless mirror
- One set comprises:
 - 2x rigid supporting clamps
 - 2x holding clamps with springs
 - 4x plastic plugs
 - 4x Ø 3.5 mm wood screws
- Brass

Finish	Cat. No.
Chrome-plated	293.50.025

Order qty: 1 set

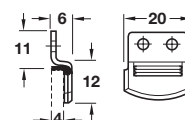


D Mirror clip

- Straight
- With rubber pad
- Steel

Finish	Cat. No.
Nickel-plated	291.01.013

Order qty: Multiples of 100 pcs

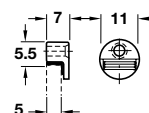


E Mirror clip

- Cranked
- With rubber pad
- Steel

Finish	Cat. No.
Nickel-plated	291.21.015

Order qty: Multiples of 100 pcs

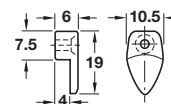


F Mirror clip

- Round
- With rubber pad
- Zinc alloy

Finish	Cat. No.
Nickel-plated	292.01.710

Order qty: Multiples of 100 pcs

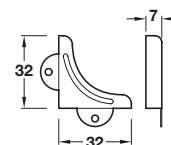
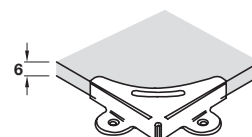


G Mirror clip

- Oval
- With rubber pad
- Plastic

Finish	Cat. No.
Transparent	291.09.402

Order qty: Multiples of 100 pcs



H Mirror corner

- Chrome-plated steel

Finish	Cat. No.
Chrome-plated	291.22.001

Order qty: Multiples of 100 pcs

TCH-FF 2010, HUK. Dimensional data not binding. We reserve the right to alter specifications without notice.