

A Revolving mirror fitting

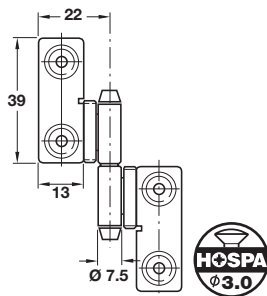
- For mirrors in wooden frames
- Revolves on a horizontal axis
- Please note: this product will only rotate when appropriately mounted and fixed, it will not rotate by hand
- Steel

Finish	Cat. No.
Nickel-plated	294.40.702
Yellow chromated	294.40.506

Order qty: 1 pc

5

Connecting Fittings



B Mirror hinge

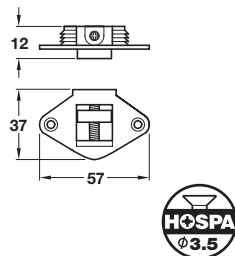
- Nickel-plated steel

Handed	Cat. No.
Left	+ 294.13.116
Right	+ 294.13.107

Order qty: 1 pc

Discontinued

Discontinued when stock = 0

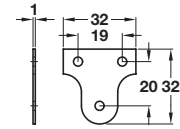


C Concealed bracket

- Adjustable coupling for fastening panels and mirrors
- A through hole from the top end panel allows you to adjust the bracket height and get the panel perfectly level
- Enables panels to be adjusted, removed and secured again with extreme ease
- Black nylon box with steel hooks
- Screws not included

	Cat. No.
Concealed bracket	291.04.301

Order qty: 1 pc

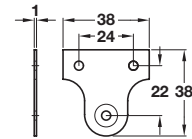


D Mirror plate, 32 mm version

- For fixing mirrors/pictures to walls
- Fixings not included
- Steel

Finish	Cat. No.
Brass	291.06.500
Nickel	291.06.600

Order qty: Multiples of 100 pcs

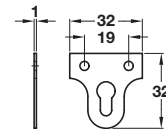


E Mirror plate, 38 mm version

- For fixing mirrors/pictures to walls
- Fixings not included
- Steel

Finish	Cat. No.
Brass	291.06.501
Nickel	291.06.601

Order qty: Multiples of 100 pcs

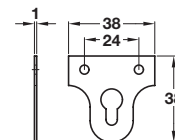


F Mirror plate, 32 mm version

- For fixing mirrors/pictures to walls
- Fixings not included
- Steel

Finish	Cat. No.
Brass	291.06.510
Nickel	291.06.610

Order qty: Multiples of 100 pcs



G Mirror plate, keyhole, 38 mm version

- For fixing mirrors/pictures to walls
- Fixings not included
- Steel

Finish	Cat. No.
Brass	291.06.511
Nickel	291.06.611

Order qty: Multiples of 100 pcs

TCH-FF 2010, HUK. Dimensional data not binding. We reserve the right to alter specifications without notice.