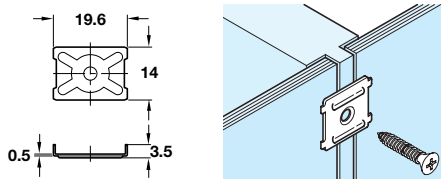


A Rear panel connector

- Screw fixing, screw included
- Plastic

Finish	Cat. No.
White	260.03.700

Order qty: Multiples of 100 pcs



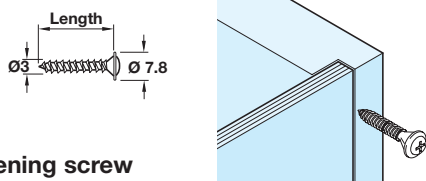
B Rear panel connector

- Provides rapid and simple attachment of two rear panels to a centre partition
- Steel



Finish	Cat. No.
Bright	260.01.007

Order qty: Multiples of 100 pcs



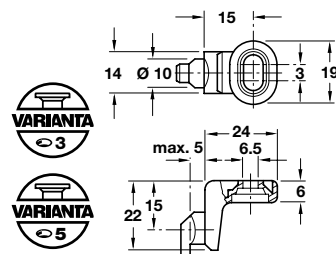
C Rear panel fastening screw

- With large head and Pozidriv cross-slot, size 2
- For direct screw mounting of the rear panel
- Galvanized steel



Length	Cat. No.
20 mm	016.10.555
25 mm	016.10.573

Order qty: Multiples of 1000 pcs

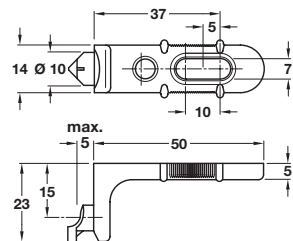
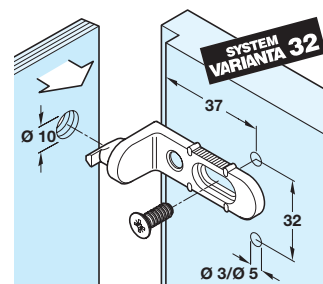


D Rear panel connector, hook-in

- Fastens through $\text{Ø } 10 \text{ mm}$ hole in rear panel
- Direct fixing to cabinet side panel with Varianta screw
- With vertical adjustment
- Zinc alloy
- Varianta screw must be ordered separately, shown on page 70

Finish	Cat. No.
Nickel-plated	260.02.755

Order qty: Multiples of 100 pcs



E Rear panel connector, hook-in

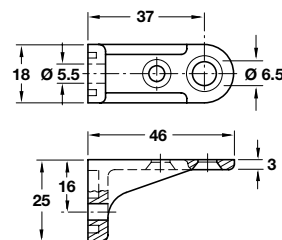
- Fastens through $\text{Ø } 10 \text{ mm}$ hole in rear panel
- Direct fixing to cabinet side panel with Varianta screw
- With front to back adjustment
- Zinc alloy
- Varianta screw must be ordered separately, shown on page 70

Finish	Cat. No.
Nickel-plated	260.14.700

Order qty: Multiples of 100 pcs



An additional screw can be used to increase stability

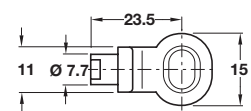


F Rear panel connector, screw fixing

- Fastens to rear panel with Hospa screw
- Direct fixing to cabinet side panel with Varianta screw
- Plastic
- Varianta screw must be ordered separately, shown on page 70

Finish	Cat. No.
Brown	260.13.123
White	260.13.721

Order qty: Multiples of 100 pcs



G Rear panel connector

- For hooking into rear panel
- With re-adjusting slot
- For screw fixing to cabinet, rear panel for hooking into $\text{Ø } 8 \text{ or } 10 \text{ mm}$ drill hole
- Zinc alloy

Finish	Cat. No.
Nickel-plated	260.02.760

Order qty: Multiples of 100 pcs