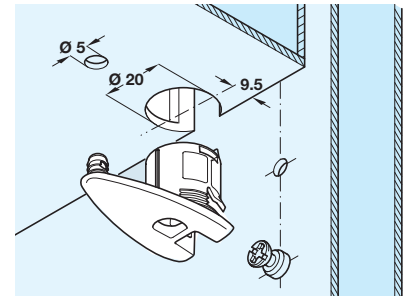
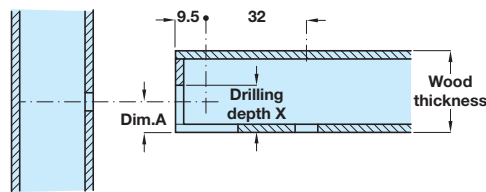


### Rafix 20 HC Connector

For lightweight panels with a top layer (chipboard or MDF) of 4 mm and above

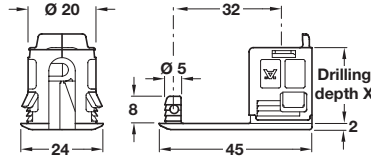
Suitable for lightweight panels without frame

Order Rafix 20 HC housing and M20 connecting bolt separately



#### A Rafix 20 HC connector housing

- For wood thickness from 32-50 mm
- Drive: PZ2 cross slot
- Plastic boss insert with zinc alloy tightening element
- Order M20 connecting bolt **263.20.131** separately

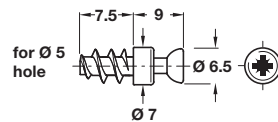


For wood thickness from	Dim. A	Drilling depth X	Brown	White	Black	Nickel colour lacquered
32-50 mm	16 mm	22.5 mm	263.18.102	263.18.702	263.18.302	263.18.602

Order qty: Multiples of 100 pcs

#### B Connecting bolt

- With special thread
- For direct installation in  $\varnothing 5$  mm holes
- Zinc alloy



Finish	Cat. No.
Galvanized	263.20.131

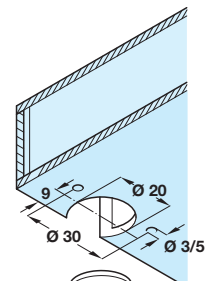
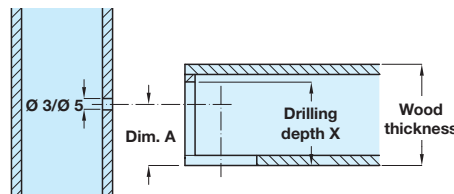
Order qty: Multiples of 100 pcs

### Tab 20 HC Connector

For lightweight panels with a top layer (chipboard or MDF) of 4 mm and above

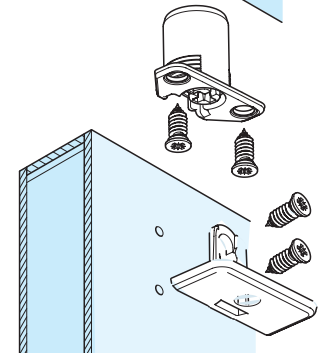
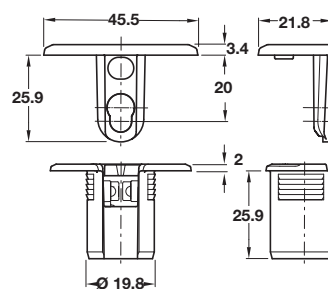
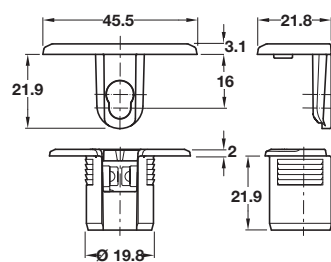
Suitable for lightweight panels without frame

Order Tab 20 HC housing and Varianta special screw separately, shown on page 6



For wood thickness 32-50 mm

For wood thickness 40-60 mm



#### C Tab 20 HC connector housing

- For wood thickness from 32-50 mm or 40-60 mm
- Drive: PZ2, PH2 or flat blade
- Plastic boss insert, natural finish, with zinc alloy support and tightening element
- Order Varianta special screw **013.30.900** or **013.30.910** separately, shown on page 6

For wood thickness from	Dim. A	Drilling depth X	Cat. No.	
			Black	Nickel-plated
32-50 mm	16 mm	22.0 mm	263.95.332	263.95.732
40-60 mm	20 mm	26.5 mm	263.95.335	263.95.735

Order qty: Multiples of 10 pcs

