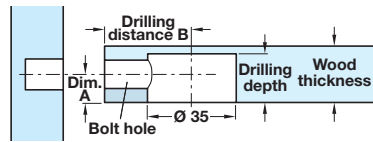
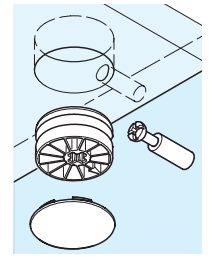


• Universal connector Maxifix E

- Individual connector to drill in for very strong connections with a high load capacity of wooden components, **minimum wood thickness of 18 mm**
- Wide range of applications e.g. as a worktop connector with double-ended bolt **F**
- Long tightening distance and rapid tightening with an allen key SW6 or cross slot PZ3
- Can be tightened using an electric screw driver (bit allen key SW6 or cross slot PZ3)



Bolt hole = Ø 10 mm
Drilling depth = 15.5 mm or 1/2 wood thickness + 6.5 mm
Distance A = 9.5 mm
Drilling dist. B = optional between **B 35** (35 mm) or **B 55** (55 mm), drilling distance from housing centre to panel front edge

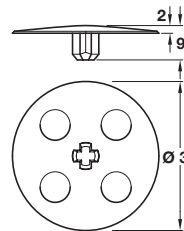
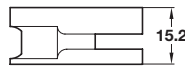


A Maxifix E housing

- Wide range of applications
- For wood thicknesses **from 18 mm**
- Drilling depth: 15.5 mm or 1/2 wood thickness + 6.5 mm
- Zinc alloy

Finish	SW6	PZ3
Nickel-plated	262.87.703	262.87.713
Nickel-coloured	262.87.603	262.87.613

Order qty: Multiples of 50 pcs



B Maxifix E cover cap

- Plastic

Colour	Beige	Brown	Black	White
Cat. No.	262.87.490	262.87.190	262.87.390	262.87.790

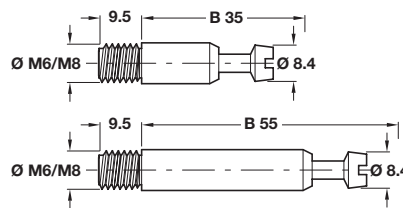
Order qty: Multiples of 100 pcs

C Maxifix E connecting bolt

- Screws into M6 sleeve 030.10.864 or M8 sleeve 030.10.885, shown in **Section 11**, page 16
- Zinc-plated steel

Drilling distance B	35 mm	55 mm
M6 thread	262.87.901	262.87.902
M8 thread	262.87.911	262.87.912

Order qty: Multiples of 50 pcs

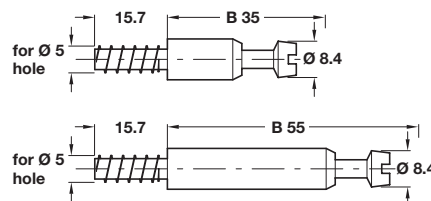


D Maxifix connecting bolt

- With special thread
- Screws directly into Ø 5 mm holes
- Zinc-plated steel

Drilling distance B	35 mm	55 mm
Cat. No.	262.87.931	262.87.932

Order qty: Multiples of 50 pcs

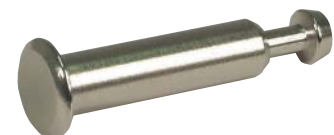
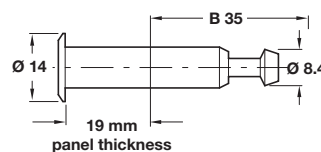


E Maxifix E capped connecting bolt

- For single-sided installation through Ø 10 mm hole
- Steel

Drilling distance B	35 mm
Nickel-plated	262.87.781
Bronzed	262.87.181

Order qty: Multiples of 50 pcs

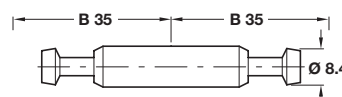


F Maxifix E connecting bolt

- For double-sided installation through Ø 10 mm holes
- Zinc-plated steel

Drilling distance B	2x 35 mm
Cat. No.	262.87.921

Order qty: Multiples of 50 pcs



TCH-FF 2010, HUK. Dimensional data not binding. We reserve the right to alter specifications without notice.