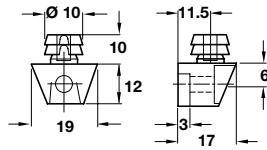


A Arret cabinet connector

- With dowel plug for $\varnothing 10$ mm hole
- Order **fastening materials C** and **D** or **E** and **F** separately, for installation in $\varnothing 5$ mm Varianta 32 series-drilled holes
- For single or double-sided constructions
- Nylon

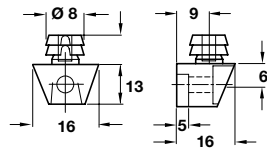


Finish	White	Brown
Cat. No.	262.40.737	262.40.139

Order qty: Multiples of 100 pcs

B Cabinet connector

- With dowel plug for $\varnothing 8$ mm hole
- Order **fastening materials C** and **D** or **E** and **F** separately, for installation in $\varnothing 5$ mm Varianta 32 series-drilled holes
- For single and double-sided constructions
- Plastic



Finish	White	Brown
Cat. No.	262.40.700	262.40.100

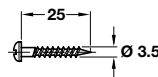
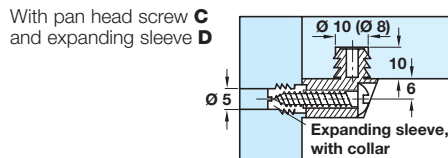
Order qty: Multiples of 100 pcs

C Hospa pan head screw

- **For single-sided installation**
- For $\varnothing 5$ mm hole
- Steel

Finish	Cat. No.
Galvanized	015.71.679

Order qty: Multiples of 1000 pcs

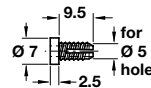


D Expanding sleeve

- With collar for use with pan head screw **C**
- Natural coloured nylon

	Cat. No.
Expanding sleeve	340.43.019

Order qty: Multiples of 100 pcs

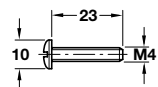
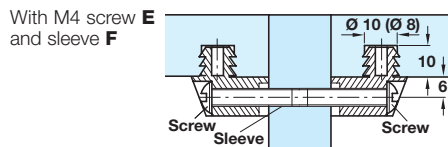


E M4 threaded screw

- **For double-sided installation**
- For $\varnothing 5$ mm hole
- With combination slot head
- Steel

Finish	Cat. No.
Bright galvanized	022.35.234

Order qty: Multiples of 100 pcs

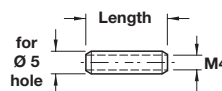
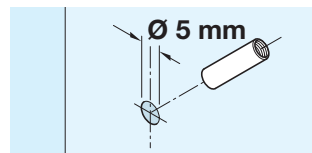


F Sleeve

- With M4 internal thread, for press-fit installation in $\varnothing 5$ mm holes
- Suitable for double-sided constructions
- Steel

Length	15 mm	18 mm	22 mm	30 mm
Bright	267.00.011	267.00.012	267.00.013	267.00.016
Galvanized	267.00.911	267.00.912	267.00.913	267.00.916

Order qty: Multiples of 100 pcs



G Uno 1 knock down fitting

- With integrated special screw for $\varnothing 5$ mm holes
- Plastic

Finish	White	Brown
Cat. No.	262.41.707	262.41.109

Order qty: Multiples of 100 pcs

